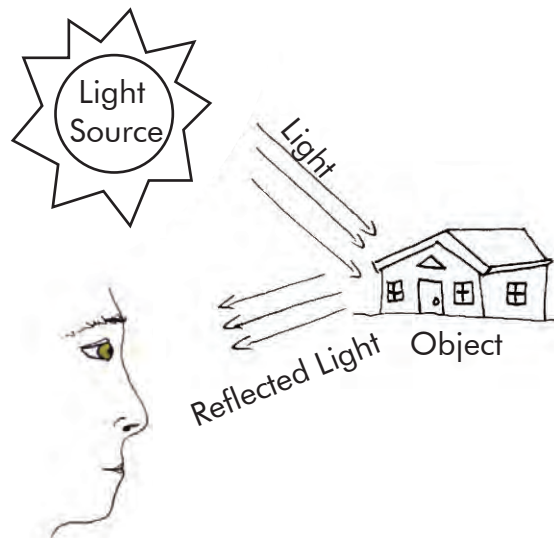
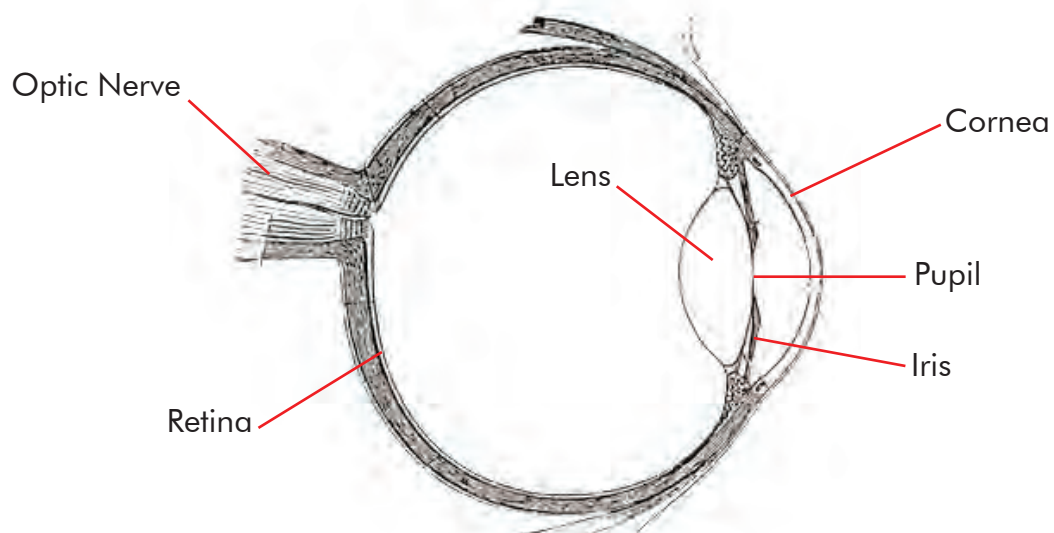


How Do We See?

Light travels in straight lines. When light hits an object, it is reflected and enters our eyes. This is how we see the object.



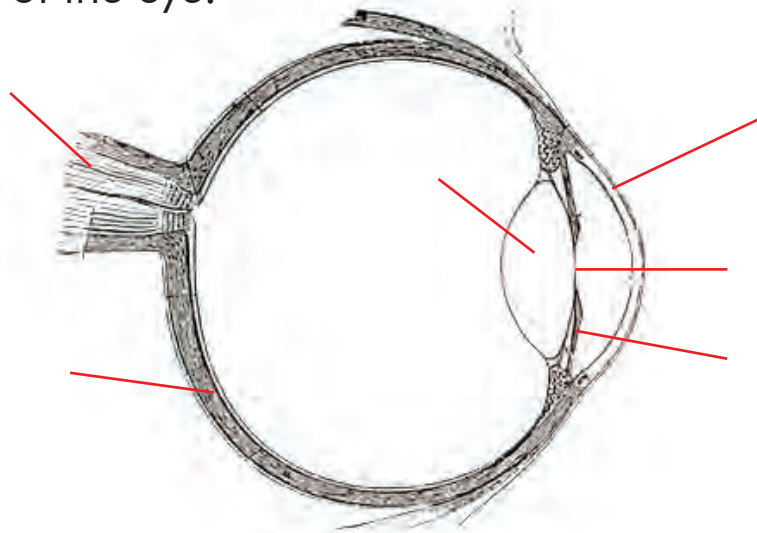
The Eye



How Do We See?

The iris is the colored part of our eyes. It expands and shrinks to adjust how much light is let into the eye. The pupil is the black hole in our eyes. It what the Iris controls to let in light. The cornea is a thin, clear film that protects our eyes from the environment. The lens converts the light coming into our eyes and projects it onto the retina. The retina has thousands of light-sensitive nerves that send a message through our optic nerve and into our brain, which is where we see.

Fill in the diagram of the eye.



TRY THIS!

Color blindness is a very common condition. In extreme and rare cases it means that the person cannot see any color, only shades of gray! In more common cases, a person cannot tell the differences between certain colors. The most common example of this is red/green color blindness, where a person has difficulty seeing the differences between these two colors. This diagram is a test. Can you see the number?

