

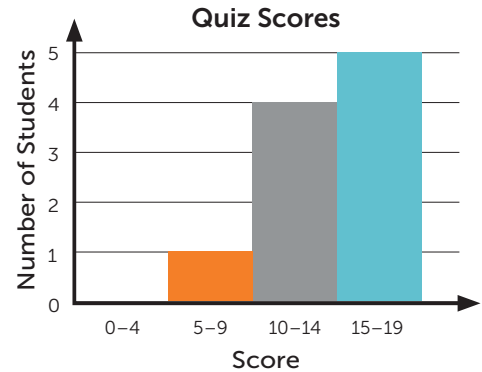
HISTOGRAMS

A **histogram** is a type of graph that displays data using bars. Histograms are similar to bar graphs, but they always display numerical data in equal groups, or **bins**.

Here's an example! A math tutor recorded his students' scores, out of 20, on a quiz.

14 17 18 11 9 12 16 19 18 13

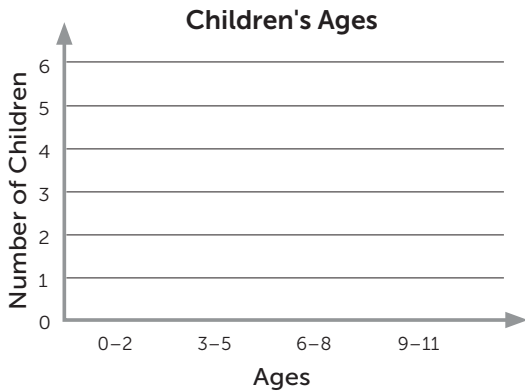
Notice that the height of each bar on the histogram matches the number of values in each bin. For example, 4 students scored in the 10–14 range on the quiz.



Complete the histogram for each data set.

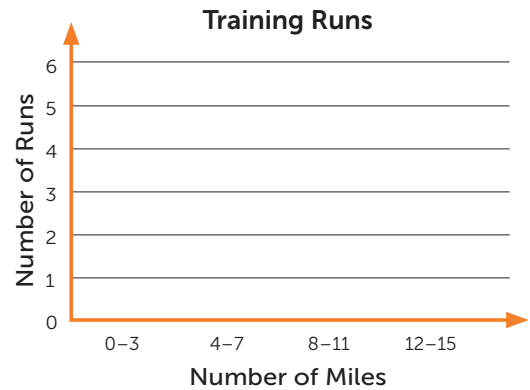
- 1 Maria recorded the ages of the children she babysits.

3 9 2 4 4 5 7 2 7 6



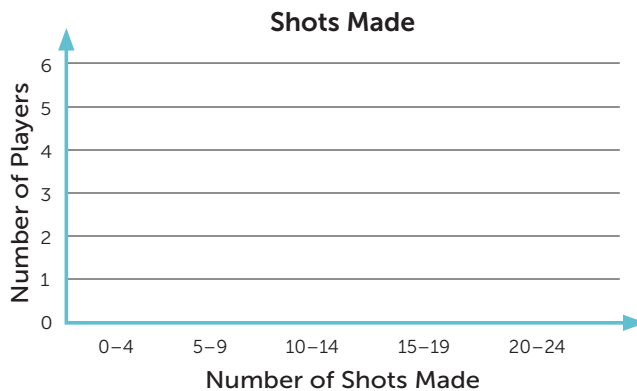
- 2 Zac is training for a half marathon. He records the number of miles he runs each time he trains.

11 13 9 14 3 12 15 7 9 8 10 10



- 3 A basketball coach recorded the number of shots each player made during practice.

11 22 8 16 14 24 7 17 3 9 15 20 12 23

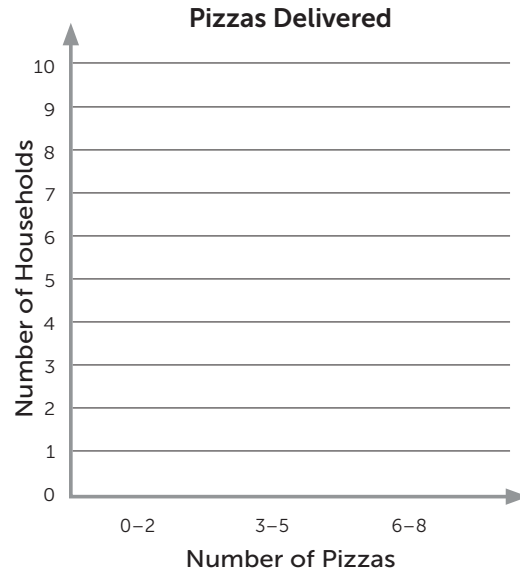


HISTOGRAMS

Complete the histogram for each frequency table.

- 4 Theo works at Pierre's Pizzas as a delivery driver. He recorded the number of pizzas he delivered to each household over the weekend.

Number of Pizzas	Number of Households
1	7
2	3
3	2
4	4
5	2
6	1
8	1



- 5 Kira is keeping a log of how much she reads each week. She records the time she spends reading to the nearest hour.

Number of Hours	Number of Weeks
1	1
2	1
4	5
5	4
6	4
7	2
8	1

