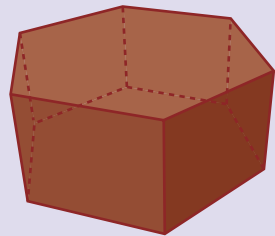
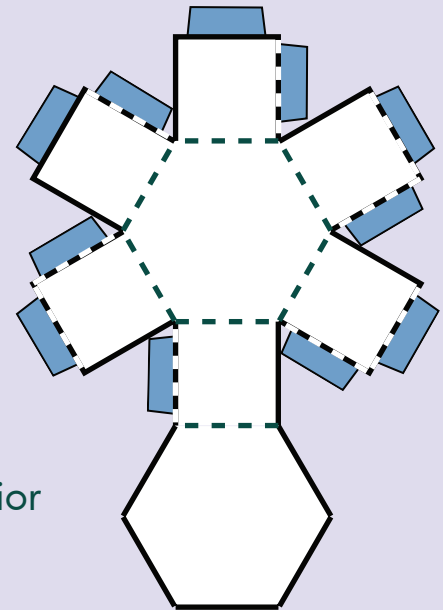


Let's make some 3-D art! Print the hexagonal prism on the next page. Then follow the instructions below to construct your paper prism.

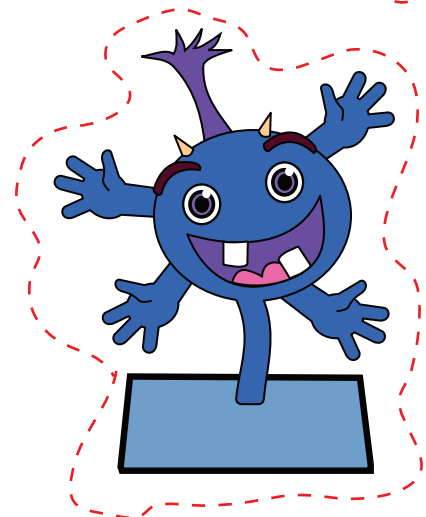
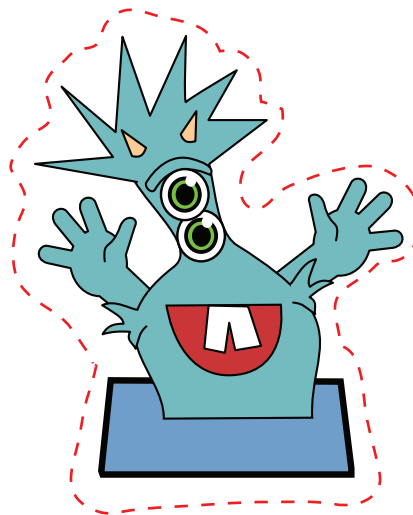
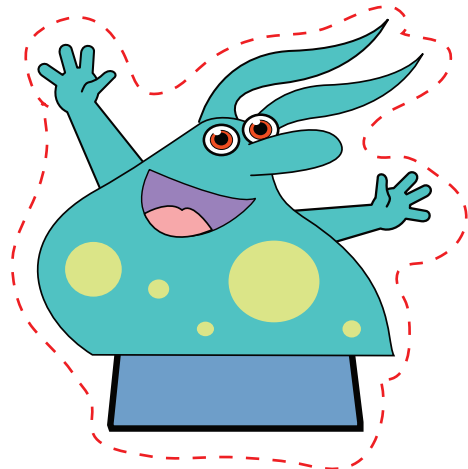
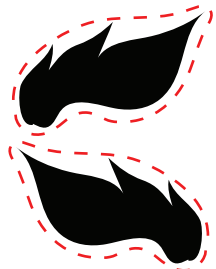
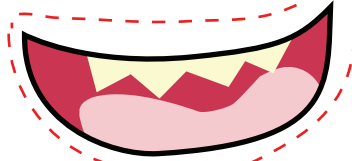
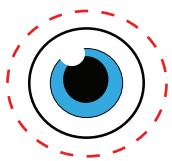
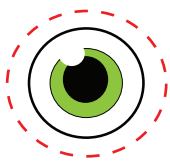
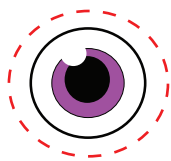
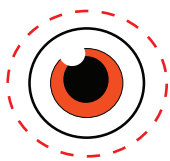


hexagonal prism

1. Color and decorate the shapes in the cut-out.
2. Cut out the entire shape.
3. Fold up along all dotted lines.
4. Glue the flaps to the interior of the shape.



Cut out the pieces below and glue them to your prism to make a silly monster box!



3-D Art

