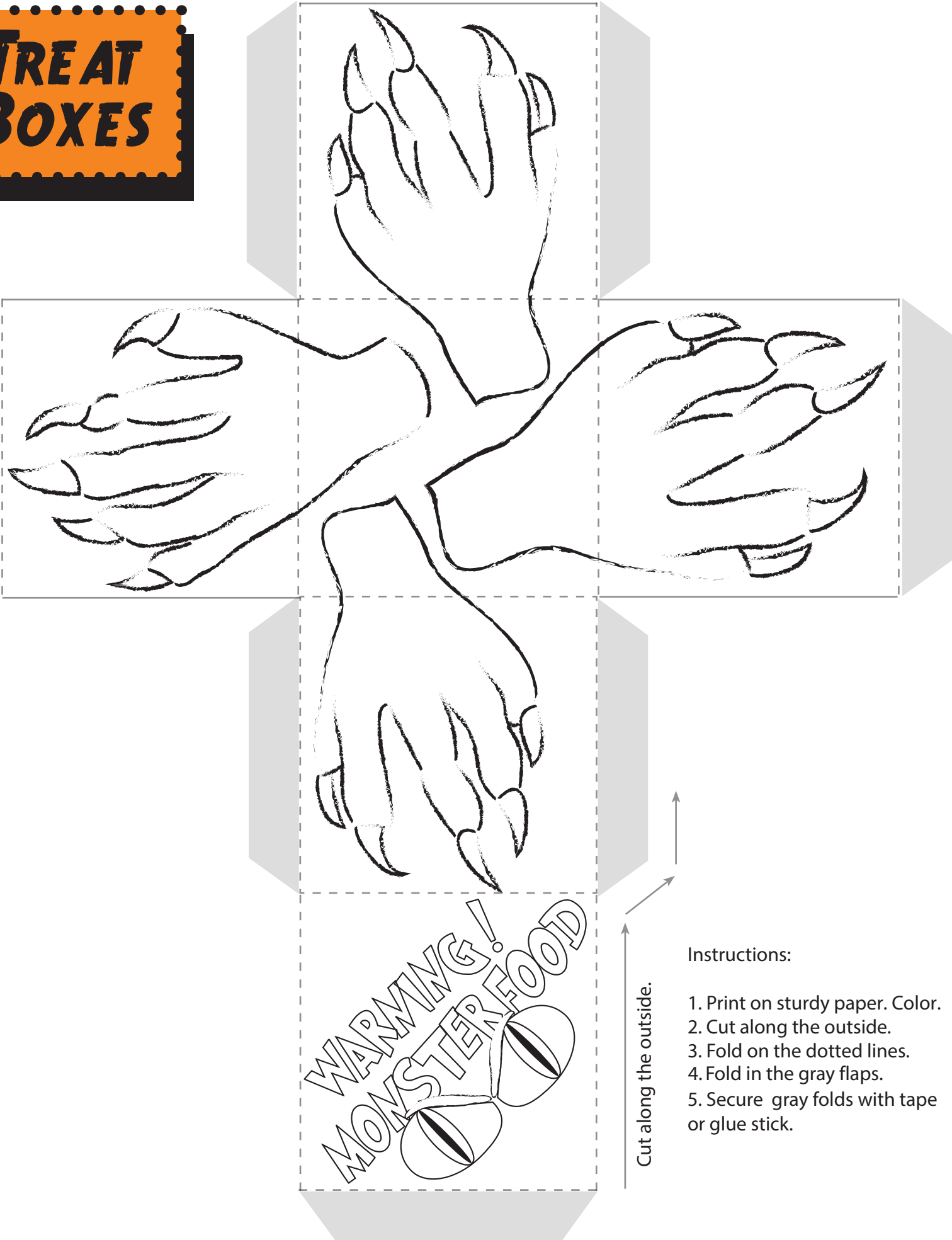


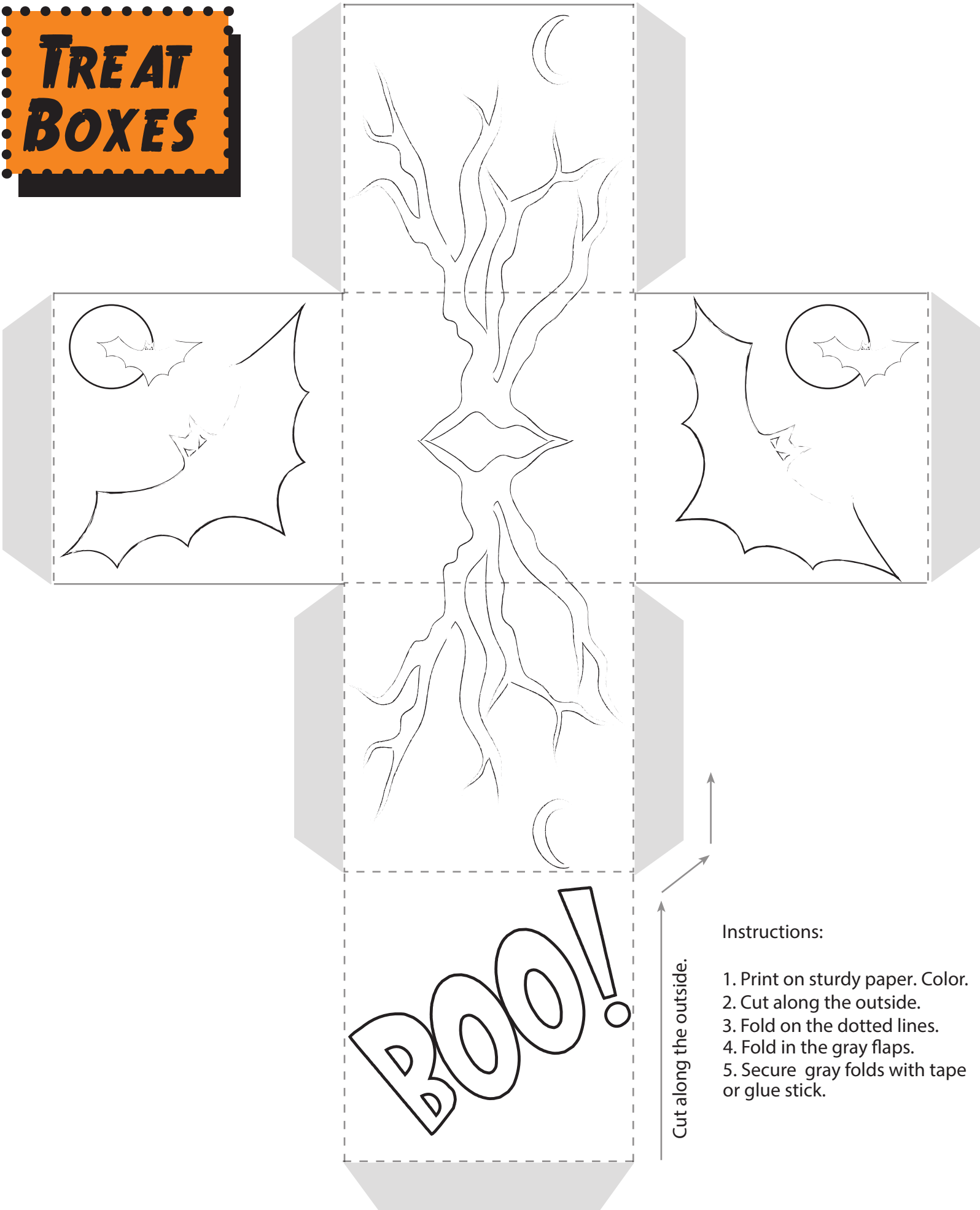
TREAT BOXES



Instructions:

1. Print on sturdy paper. Color.
2. Cut along the outside.
3. Fold on the dotted lines.
4. Fold in the gray flaps.
5. Secure gray folds with tape or glue stick.

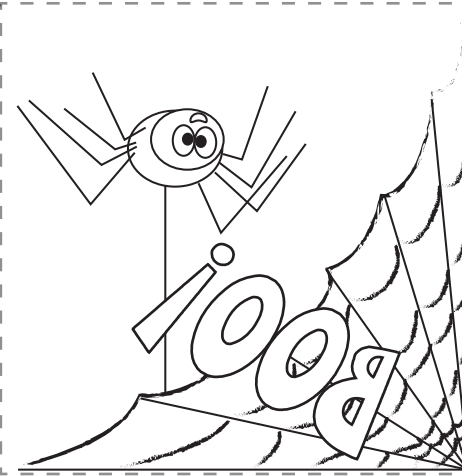
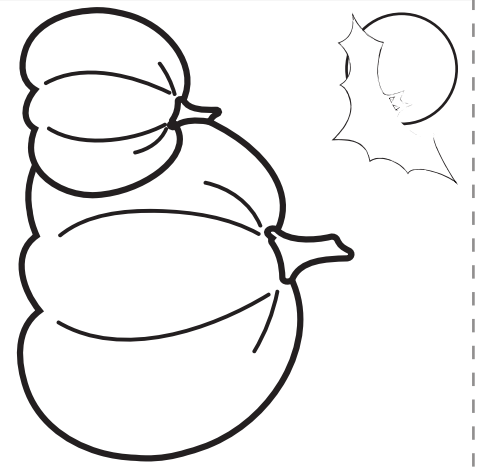
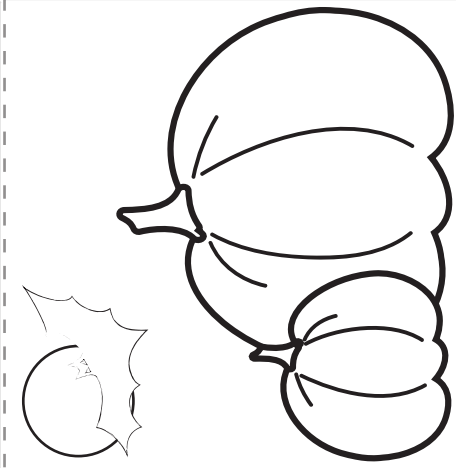
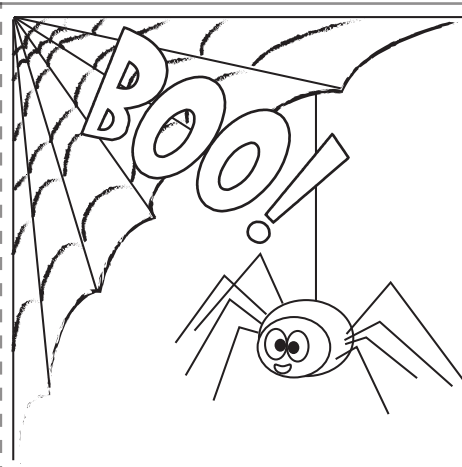
TREAT BOXES



Instructions:

1. Print on sturdy paper. Color.
2. Cut along the outside.
3. Fold on the dotted lines.
4. Fold in the gray flaps.
5. Secure gray folds with tape or glue stick.

TREAT BOXES



TO:

FROM:

Cut along the outside.

Instructions:

1. Print on sturdy paper & color.
2. Cut along the outside.
3. Fold on the dotted lines.
4. Fold in the gray flaps.
5. Secure gray folds with tape or glue stick.