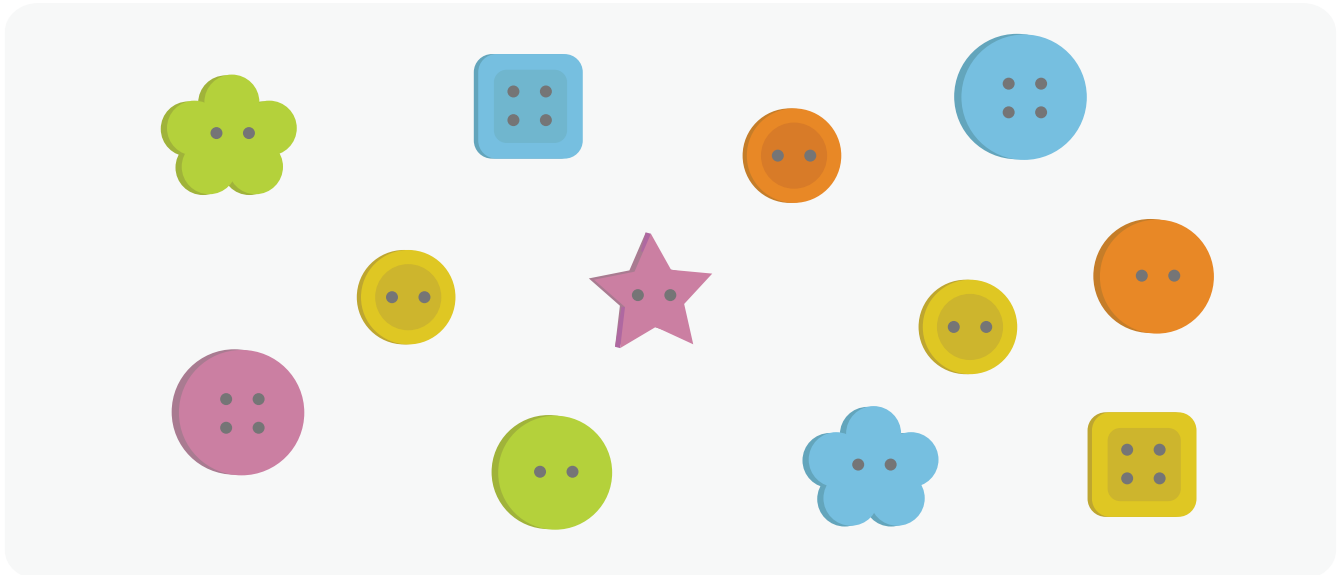


# Buttons, Buttons

Use the picture to answer the questions.



What fraction of the buttons are blue?  $\frac{\square}{\square}$

What fraction of the buttons are green?  $\frac{\square}{\square}$

What fraction of the buttons are stars?  $\frac{\square}{\square}$

What fraction of the buttons have 2 holes?  $\frac{\square}{\square}$

What fraction of the buttons are circles?  $\frac{\square}{\square}$

What fraction of the buttons have 4 holes?  $\frac{\square}{\square}$

