

Ending "D" and "B" Sounds

The sound at the end of **bird**



is spelled with the letter **d**.

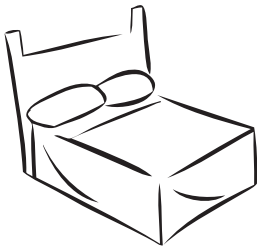
The sound at the end of **tub**



is spelled with the letter **b**.

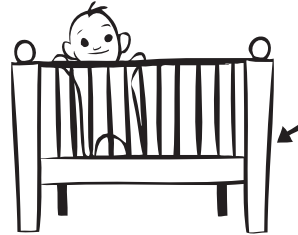
Directions: What do you see in each picture? Say the name of each picture out loud. Decide if the word ends with a **d** sound or a **b** sound. Write the letter.

1.



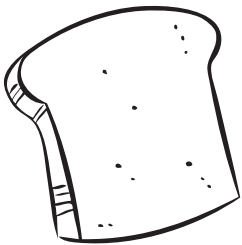
be__

2.



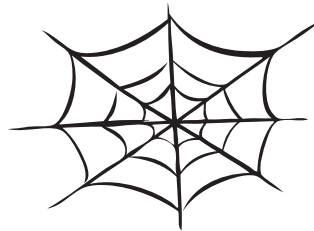
cri__

3.



brea__

4.



we__

5.



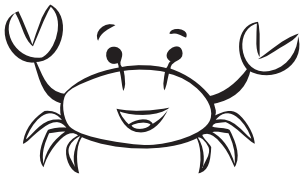
sle__

6.



pon__

7.



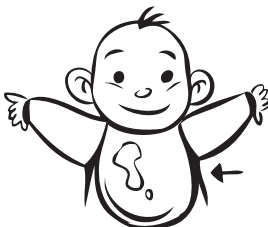
cra__

8.



cu__

9.



bi__

10.



ki__