

# Division :

## Equal Groups: Division

In this drawing there are 5 equal groups of stars with 4 stars in each group. There are a total of 20 stars.



This division sentence shows how the 20 stars are divided into equal groups.

$$\begin{array}{ccc} \text{DIVIDEND} & \text{QUOTIENT} & \\ 20 \div 5 = 4 & & \\ \text{DIVISOR} & & \end{array}$$

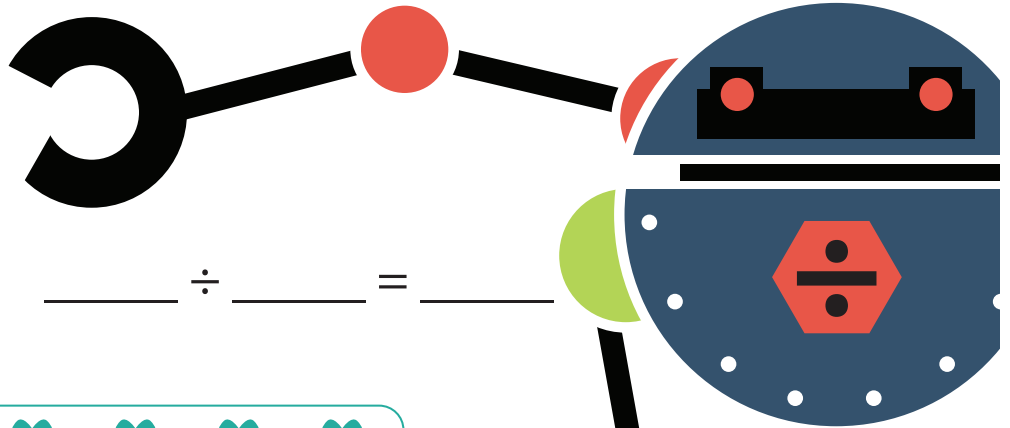
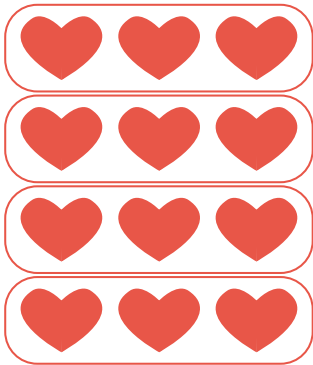
**Dividend:** total number of objects

**Divisor:** Number of equal groups

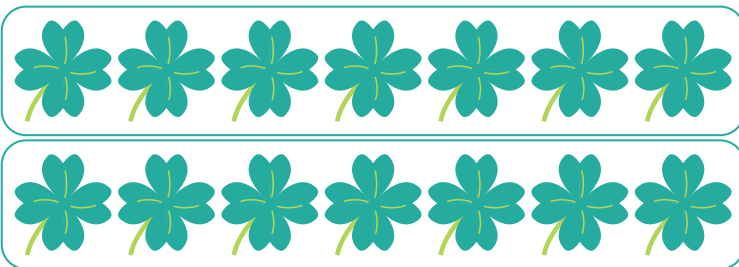
**Quotient:** Number of objects in each group

**Directions:** Now you try! Write a division sentence to represent each drawing.

1.



2.



$$\text{_____} \div \text{_____} = \text{_____}$$

3.



$$\text{_____} \div \text{_____} = \text{_____}$$