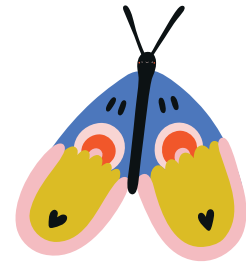




Distributive Property



The Distributive Property of Multiplication lets you multiply a sum by multiplying each addend separately.

Example: 5×13

$$= 5 \times (9 + 4)$$

$$= (5 \times 9) + (5 \times 4)$$

$$= 45 + 20$$

$$= 65$$

Try It! Draw arrows from 7 to each addend. Then fill in the boxes to complete the problem.

$$7 \times 7$$

$$= 7 \times (2 + 5)$$

$$= (7 \times \boxed{}) + (7 \times \boxed{})$$

$$= 14 + \boxed{}$$

$$= 49$$

Part 1. Use the distributive property to solve each problem below.

a. 2×11

b. 4×13

c. 3×19

d. 6×23

Part 2. Decompose one factor and use the distributive property to find the product in the problems below.

e. 5×17

f. 9×18