

Practicing Using Prefixes

to Determine Meaning: PRE, RE, ANTI, CO, UN, DIS

Use the meaning of the prefixes to determine the meaning of the words, then use each in a sentence.

Example:

If PRE means BEFORE, then...

- preheat means: to heat before doing something
- premeditate means: to meditate on (or think about) before doing something

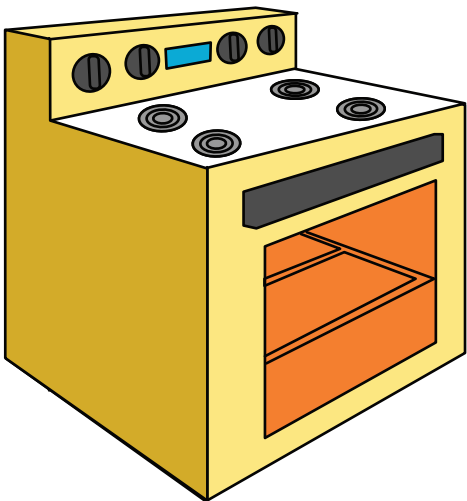
Use PREHEAT in a sentence:

I will preheat the oven before starting to make the cookies.

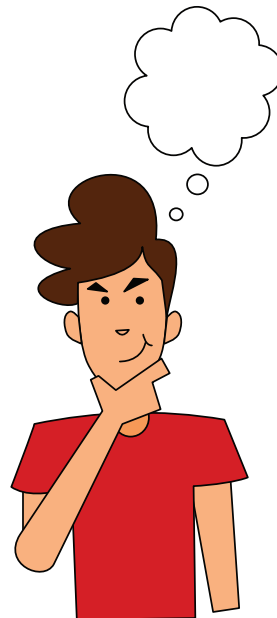
Use PREMEDITATE in a sentence:

The car accident was not premeditated.

Draw a picture that shows what PREHEAT means:



Draw a picture that shows what PREMEDITATE means:



Practicing Using Prefixes

to Determine Meaning: PRE, RE, ANTI, CO, UN, DIS

1. If RE means TO DO AGAIN, then...

- replay means: _____
- reinvestigate means: _____

Use REPLAY in a sentence:

Use REINVESTIGATE in a sentence:

Draw a picture that shows what REPLAY means:

Draw a picture that shows what
REINVESTIGATE means:

Practicing Using Prefixes

to Determine Meaning: PRE, RE, ANTI, CO, UN, DIS

2. If ANTI means AGAINST, then...

- antiwar means: _____
- antiperspirant means: _____
(hint: perspire = sweat)

Use ANTIWAR in a sentence:

Use ANTIPERSPIRANT in a sentence:

Draw a picture that shows what ANTIWAR means:

Draw a picture that shows what ANTIPERSPIRANT means:

Practicing Using Prefixes

to Determine Meaning: PRE, RE, ANTI, CO, UN, DIS

3. If CO means TOGETHER, then...

- comingle means: _____
- cohabitate means: _____
(hint: "habitare" is Latin and it means to live)

Use COMINGLE in a sentence:

Use COHABITATE in a sentence:

Draw a picture that shows what COMINGLE means:

Draw a picture that shows what COHABITATE means:

Practicing Using Prefixes

to Determine Meaning: PRE, RE, ANTI, CO, UN, DIS

4. If UN means NOT, then...

- unafraid means: _____
- unacceptable means: _____

Use UNAFRAID in a sentence:

Use UNACCEPTABLE in a sentence:

Draw a picture that shows what UNAFRAID means:

Draw a picture that shows what UNACCEPTABLE means:

Practicing Using Prefixes

to Determine Meaning: PRE, RE, ANTI, CO, UN, DIS

5. If **DIS** means **THE OPPOSITE OF**, then....

- disconnect means: _____
- disrespect means: _____

Use **DISCONNECT** in a sentence:

Use **DISRESPECT** in a sentence:

Draw a picture that shows what **DISCONNECT** means:

Draw a picture that shows what **DISRESPECT** means: