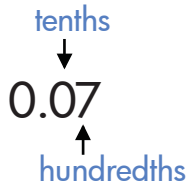
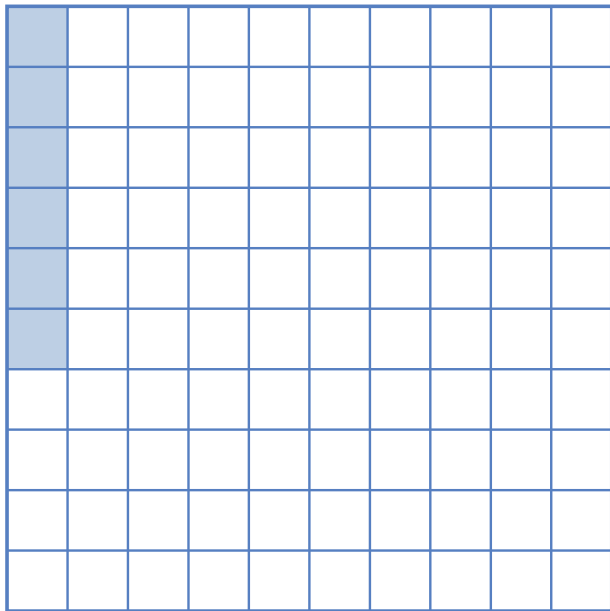


Hundredths Place

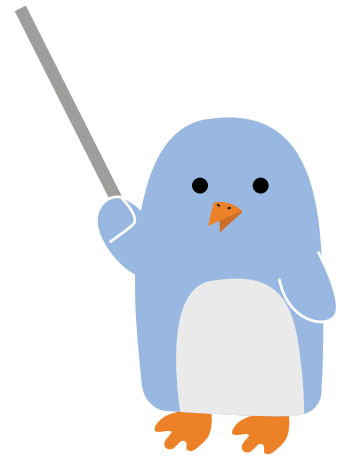


The second digit to the right of the decimal point is in the **hundredths place**.

The decimal **0.07** is equal to **seven hundredths**, or $\frac{7}{100}$.



The square has 100 equal parts.
What part of the square is shaded?
Write the answer as a decimal.



Convert each fraction to a decimal.

$$\frac{4}{100} = \underline{.04}$$

$$\frac{9}{100} = \underline{\quad}$$

$$\frac{5}{100} = \underline{\quad}$$

$$\frac{8}{100} = \underline{\quad}$$

$$\frac{1}{100} = \underline{\quad}$$

$$\frac{2}{100} = \underline{\quad}$$

$$\frac{7}{100} = \underline{\quad}$$

$$\frac{6}{100} = \underline{\quad}$$

Convert each decimal to a fraction.

$$0.05 = \frac{\square}{\square}$$

$$0.01 = \frac{\square}{\square}$$

$$0.08 = \frac{\square}{\square}$$

$$0.03 = \frac{\square}{\square}$$