

DODGE CITY STATION

DESTINATION	Leaving At:	Arriving At:	Distance (miles)	Price	Notes
ALBUQUERQUE	11:00 am	7:30 pm	476	\$27.80	Meals not included. Snacks available for \$2 on board.
BILLINGS	12:15 pm	2:30 am	933	\$46.65	Meals not included. Snacks available for \$2 on board.
COLORADO SPRINGS	11:35 am	5:35 pm	313	\$15.65	Meals not included. Snacks available for \$2 on board.
INDEPENDENCE	11:40 am	5:40 pm	346	\$17.30	Meals not included. Snacks available for \$2 on board.
SAN ANTONIO	12:00 pm	11:30 pm	660	\$33.00	Meals not included. Snacks available for \$2 on board.
SACRAMENTO	1:00 pm	See Note	1560	\$78.00	Meals and lodging included in price. Train stops in Cheyenne at 7:30 pm and leaves for Sacramento at 6 am the next day.

The Sacramento train is an overnight train. Train will arrive the day after it leaves.

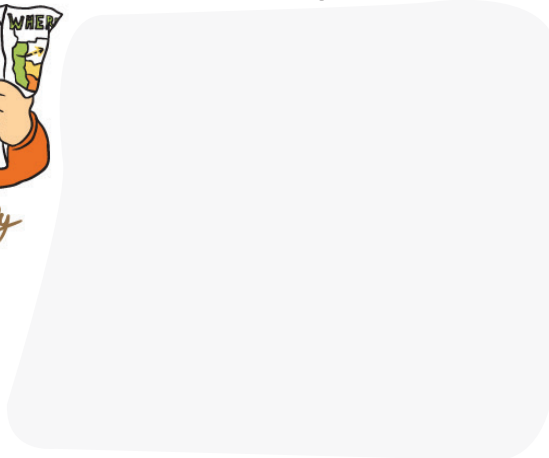


Above is the schedule for the next trains arriving at Dodge City Station.

Use the table to answer the questions on the next page.



1. Billy only has \$32.28 in cash in his pocket. Where can he go?

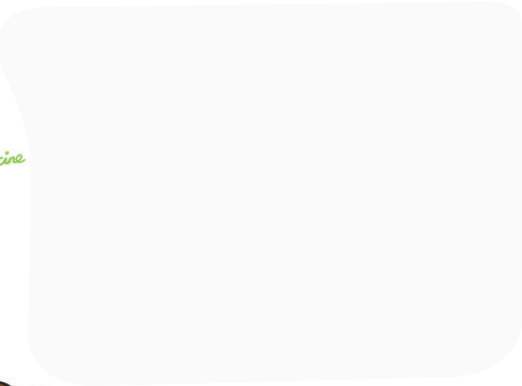


2. Susie wants to go on a trip, but she doesn't want to go very far from home. Which trip has the shortest distance?

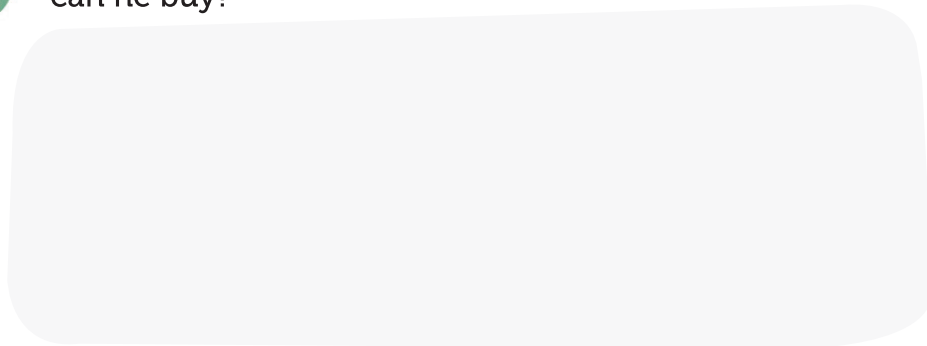
4. Annie arrives at the train station at 11:47 AM. What's the next train she can take?



3. Clementine wants to meet her family in Sacramento. If it takes 16 hours to get from Cheyenne to Sacramento, when will she arrive in Sacramento?



5. Joe is catching the train to Colorado Springs to meet his aunt and uncle. His mother gave him a \$20 to buy a ticket with. Will he have enough money left over to buy snacks on the trip? If so, how many snacks can he buy?



Bonus: find out how much each mile costs!