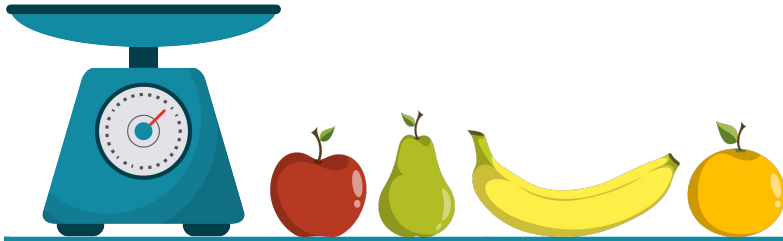


Convert Customary Units: Weight

Convert each measurement below. You can use the table to the right to help you.



Customary Units of Weight

1 pound (lb.) = 16 ounces (oz.)

1 ton = 2,000 pounds (lb.)

1. 2 lb. = _____ oz.	2. 64 oz. = _____ lb.	3. 6,000 lb. = _____ tons
4. 160 oz. = _____ lb.	5. 9 tons = _____ lb.	6. 144 oz. = _____ lb.
7. 28 lb. = _____ oz.	8. 30 tons = _____ lb.	9. 27 tons = _____ lb.
10. 97 oz. = ___ lb. ___ oz.	11. 6,005 lb. = ___ tons ___ lb.	12. 607 oz. = ___ lb. ___ oz.
13. 4,800 lb. = ___ tons ___ lb.	14. 2,089 lb. = ___ tons ___ lb.	15. 832 oz. = _____ lb.