

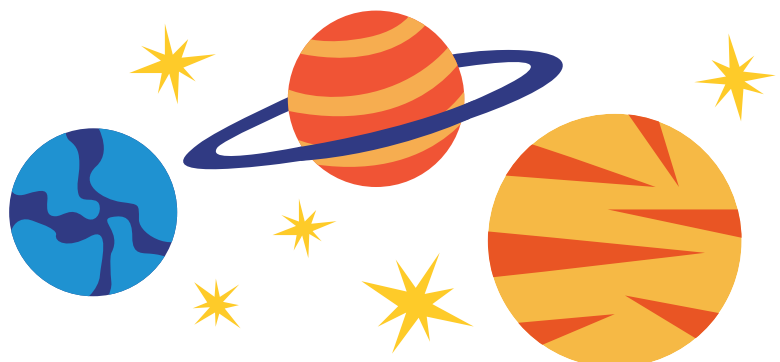
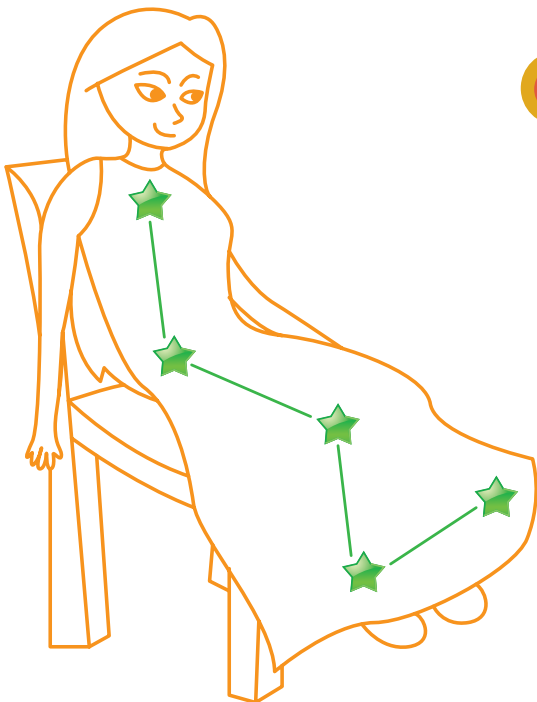
CASSIOPEIA, THE QUEEN ALWAYS VISIBLE IN THE NORTHERN SKY



Cassiopeia was a very vain queen. She thought she and her daughter Andromeda were more beautiful than the sea nymphs, and she would brag about it. When the sea nymphs complained to Poseidon, the god of the sea, he sent a monster named Cetus to their kingdom. Queen Cassiopeia and King Cepheus were forced to sacrifice their daughter to the monster. But just before she was eaten, a hero named Perseus saved her. All of these characters are constellations you can see in the sky.



Eventually, the gods were so frustrated with Cassiopeia's vanity that they hung her upside-down in the sky, as a reminder to everyone else to not be boastful. We can see the constellation Cassiopeia as a "W" shape in the sky.



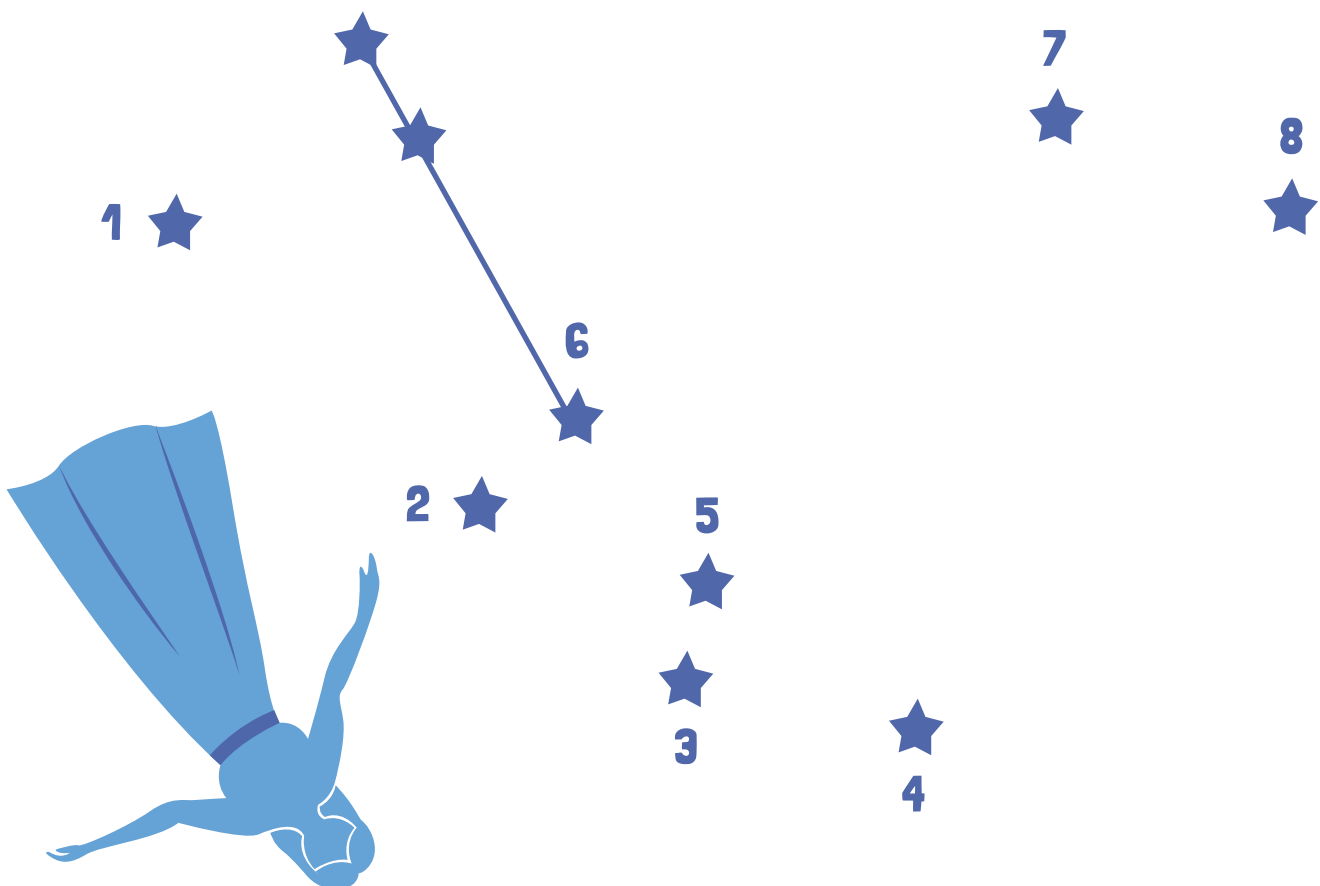
ANDROMEDA

VISIBLE IN THE NORTHERN SKY DURING FALL



After she was freed from the sea monster, Cetus, Andromeda kept her parents' promise to Perseus and married him. She left her country to live with her new husband who later became the king of Tiryns and Mycenae. The goddess Athena placed the image of Andromeda among the stars as a reward for keeping her parents' word.

CONNECT THE STARS IN ORDER TO CREATE ANDROMEDA



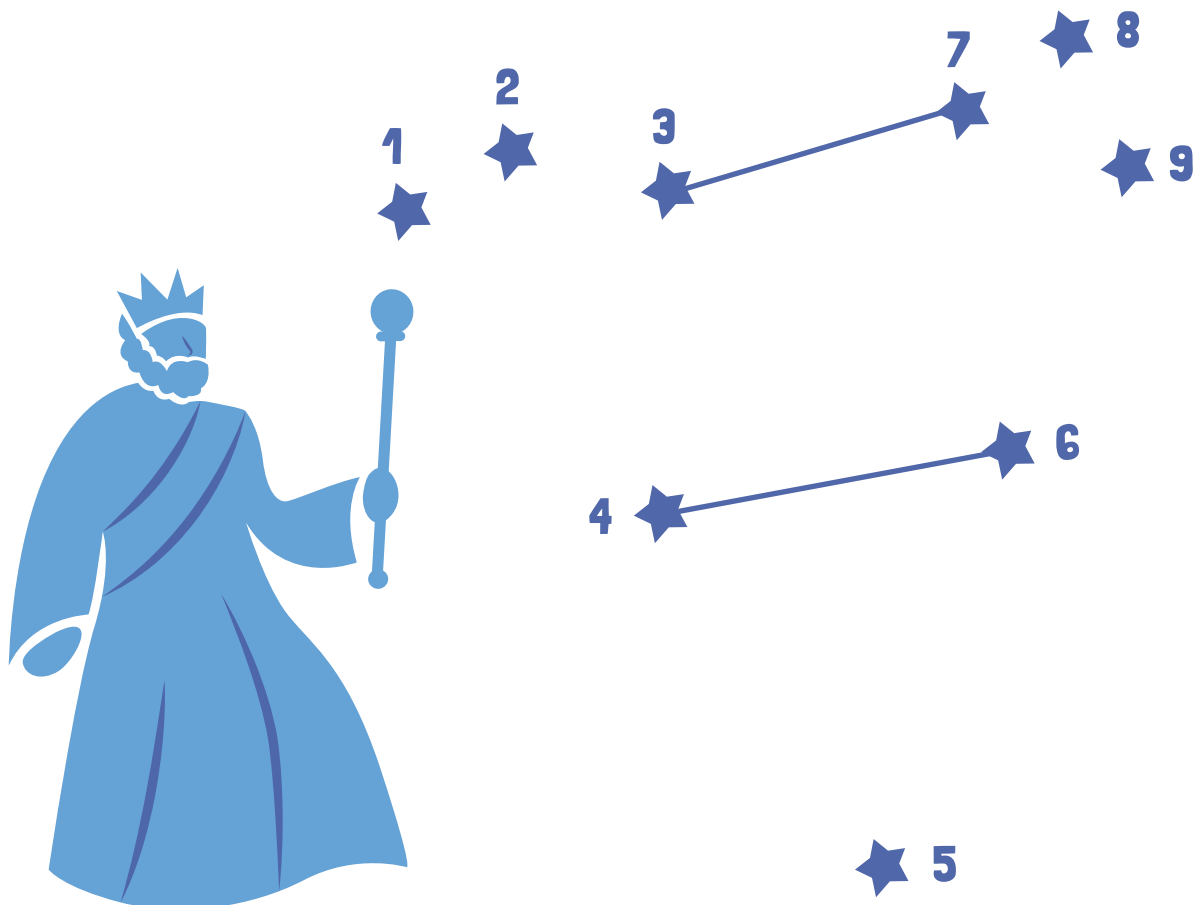
Andromeda is a "V" shaped constellation that lies right next to Pegasus, which leads some to believe that at one time, some of these stars used to be part of the winged horse.

CEPHEUS

ALWAYS VISIBLE IN THE NORTHERN SKY



- Cepheus, also known as the King, was married to the beautiful Cassiopeia, and together they had a lovely daughter, Andromeda. Although his name is most well-known in connection with his daughter, Cepheus was placed in the sky of his own right.
- The stars of the Cepheus constellation form a shape approximately like a box with a triangle on top. When fainter stars visible to the naked eye are included, Cepheus can be interpreted as looking like a king with a crown.

CONNECT THE STARS IN ORDER TO CREATE CEPHEUS

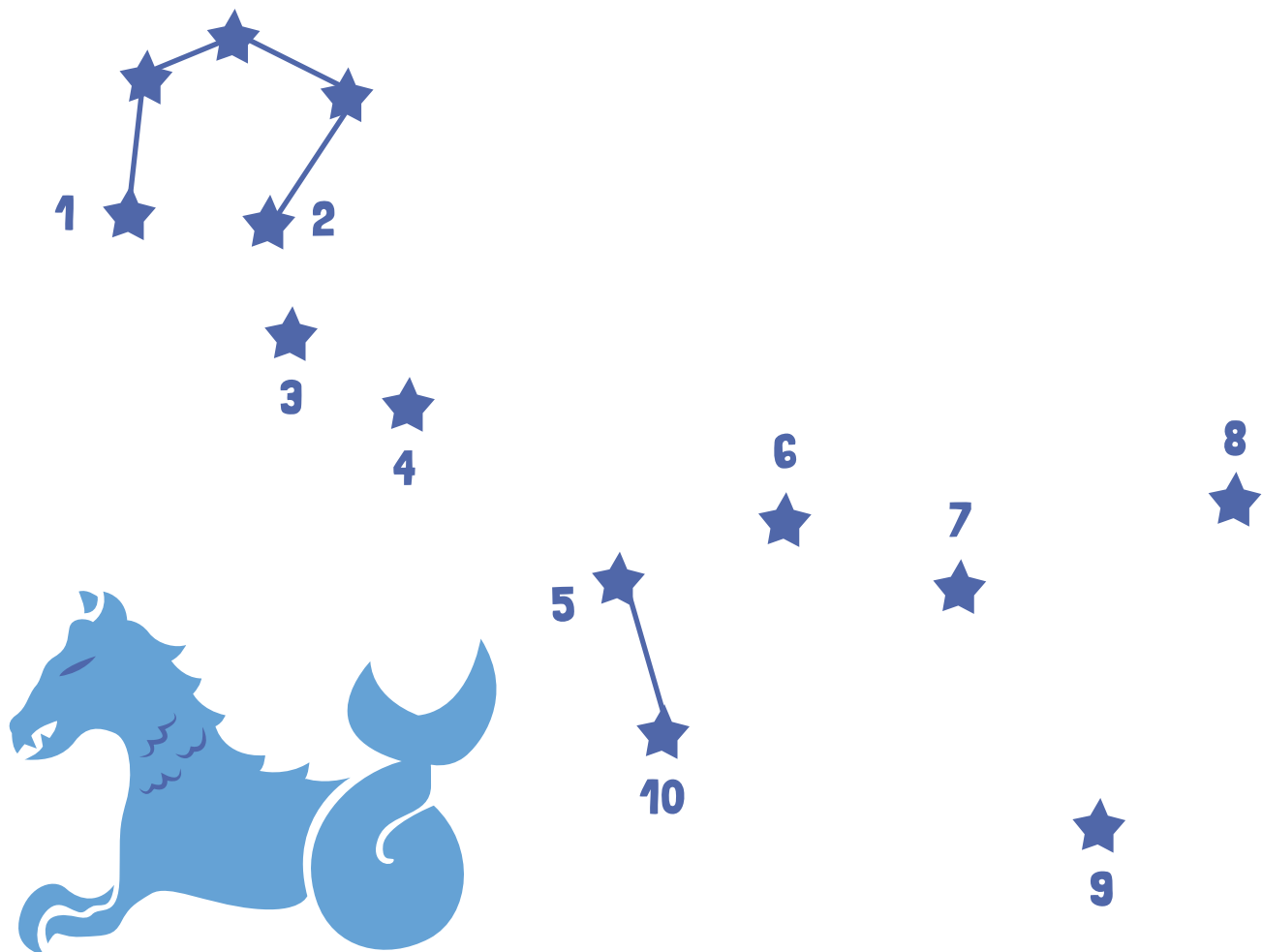


CETUS

VISIBLE IN THE NORTHERN SKY DURING WINTER

-  Cetus, or the Whale, represents the sea monster that almost ate Andromeda. It is one of the largest constellations known.
-  This constellation lies in the region of the sky called the Water, which is home to many other water-related constellations such as Pisces (the Fishes), Hydra (the Water Serpent) and Aquarius (the Water-Bearer).

CONNECT THE STARS IN ORDER TO CREATE CETUS



PERSEUS

VISIBLE IN THE NORTHERN SKY DURING WINTER

- Perseus, the hero, is known for beheading the snake-headed Medusa, to save the princess Andromeda from the giant sea monster.
- The location of Perseus lies in the main path of the Milky Way and can easily make out the human figure with a triangular body, legs and hands. In one hand, he appears to be holding the weapon, while in the other he appears to be holding Medusa's head.
- It is also home to the annual Perseid's meteor shower which is visible every August.

CONNECT THE STARS IN ORDER TO CREATE PERSEUS

