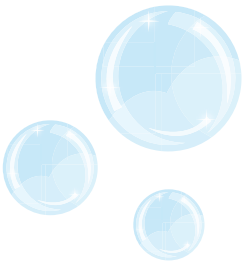
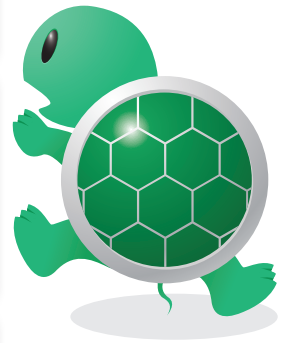
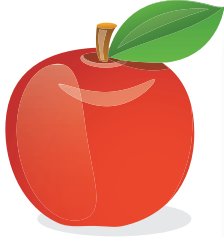


# Syllables

With "Consonant-LE" syllables a consonant is followed by "LE".  
The "LE" makes the last syllable.

Consonant LE

Not Consonant LE



Cut out the name of each word. Read each word out loud. Paste each word in the correct column below. **HINT: A consonant must be before the LE.**

turtle

bubble

puzzle

peephole

kale

apple

parole

sale