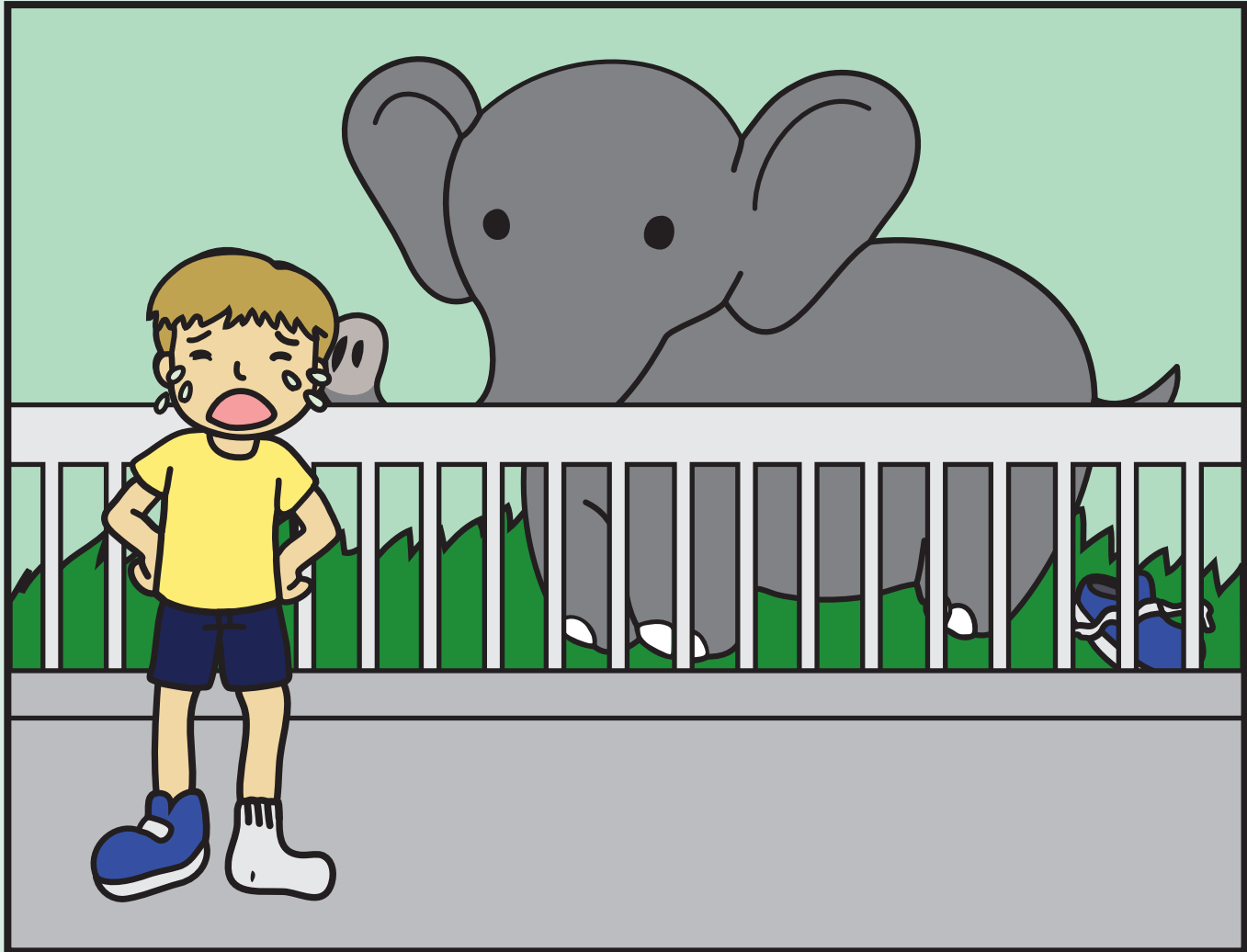


# Finish the Poem

Use the rhyming words in the word bank to complete the poem.



Henry went to the \_\_\_\_\_,  
But then he lost his \_\_\_\_\_!  
The poor boy felt so \_\_\_\_\_,  
He cried and cried: " \_\_\_\_\_!"

blue  
zoo  
boo hoo  
shoe