

Comparing Texts: Separate Traits of a Sub-Genre

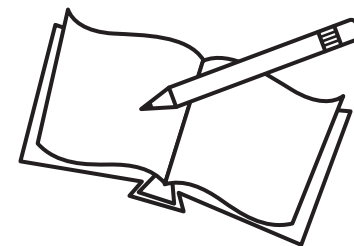
Name: _____

Date: _____

A **Genre** is a specific literary category for texts like fiction and nonfiction.

Sub-genres are kinds of fiction or nonfiction, with specific traits, or stylish features, unique to each sub-category.

A **sub-genre** of fiction example is mystery, having traits including: unexplained events, sleuths and secrets.



*Compare two texts in the same **genre** by noting similarities between two different **traits** of the genre.*

Text 1:	Author:
Text 2:	Author:
Genre:	
Genre Trait:	
Text 1 Details:	Text 2 Details:
Genre Trait:	
Text 1 Details:	Text 2 Details: