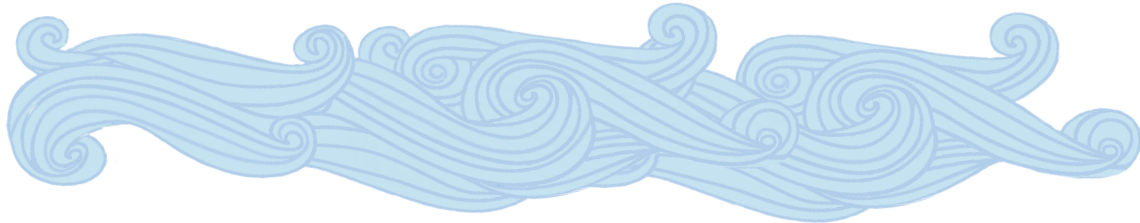


Compare and Contrast in Poetry:

“January” and “The Wind”

Read the two poems, and then answer the questions on the next page.



January

By William Carlos Williams

Again I reply to the triple winds
running chromatic fifths of **derision**
outside my window:

Play louder.

You will not succeed. I am
bound more to my sentences
the more you batter at me
to follow you.

And the wind,

as before, fingers perfectly
its derisive music.

Derision: (n.) scorn, ridicule, or
mockery

The Wind

By Robert Louis Stevenson

I saw you toss the kites on high
And blow the birds about the sky;
And all around I heard you pass,
Like ladies' skirts across the grass—
O wind, a-blowing all day long!
O wind, that sings so loud a song!

I saw the different things you did,
But always you yourself you hid.
I felt you push, I heard you call,
I could not see yourself at all—
O wind, a-blowing all day long,
O wind, that sings so loud a song!

O you that are so strong and cold,
O blower, are you young or old?
Are you a beast of field and tree,
Or just a stronger child than me?
O wind, a-blowing all day long,
O wind, that sings so loud a song!



Compare and Contrast in Poetry: "January" and "The Wind"

Answer the following questions about "January" and "The Wind."

1. Fill in the chart below with details about each poem's structure. Details might include a poem's form, shape, stanzas, rhyme scheme, rhythm, or repetition.

"January"	"The Wind"

2a. Which of these literary devices do both poets use?

- a. repetition
- b. personification
- c. simile
- d. end rhyme

2b. How do both poets use that device in a similar way for effect?

3a. Write one word to describe the tone of each poem below.

The tone of "January" is _____

The tone of "The Wind" is _____

3b. Which words in the poem contribute to the tone? Go back to the poems and highlight or underline two lines/phrases in each poem that reveal the tone. Record them below.

"January:" _____

"The Wind:" _____

4. What metaphor does each poet use to describe the wind? How do these different comparisons impact the meaning and tone of each poem?

5. What can you infer about the differences between the speakers of these two poems? How can you tell?

6. How is the speaker's attitude toward the wind in "January" different from the speaker's attitude toward the wind in "The Wind"?
