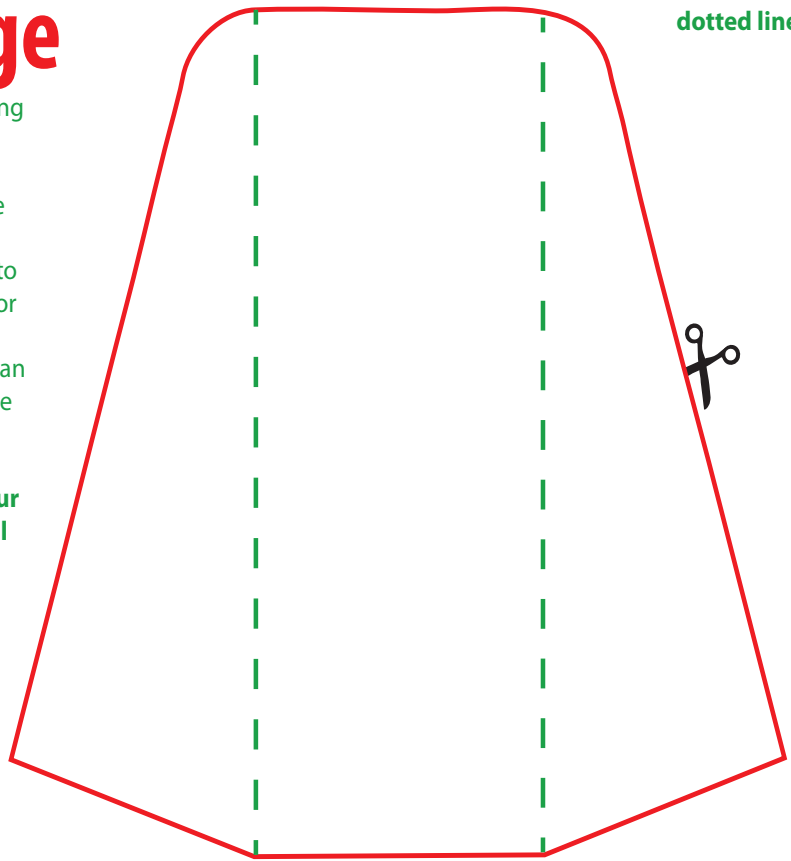
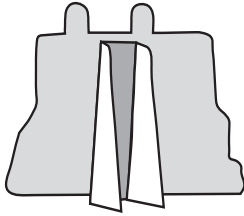


# Christmas Village

1. Color in the buildings and cut them out along the bold lines.
2. Cut out the stand.
3. Fold the outer flaps of the stand along the dotted lines.
4. With the flaps facing out, attach the stand to the back of the building with a piece of tape or glue.
5. When the tape is set or the glue dries, you can set it up in a window or on a table for a festive touch!

You can use small toys or dolls to live in your holiday village, and make snow with small bits of scrap paper or cotton balls.



← Fold on dotted lines.

