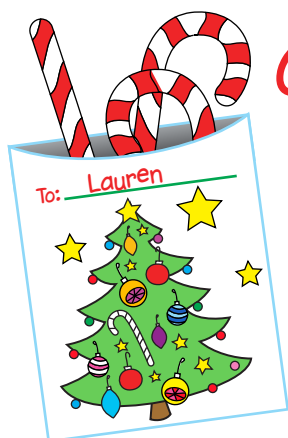
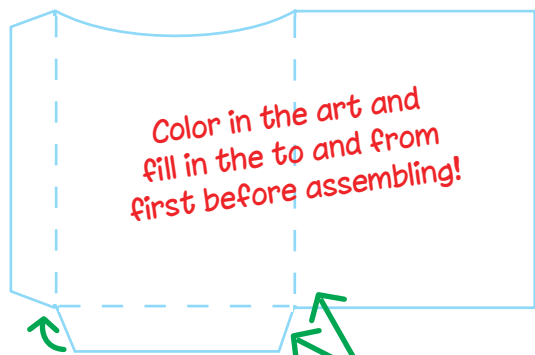


Christmas Candy Envelopes!



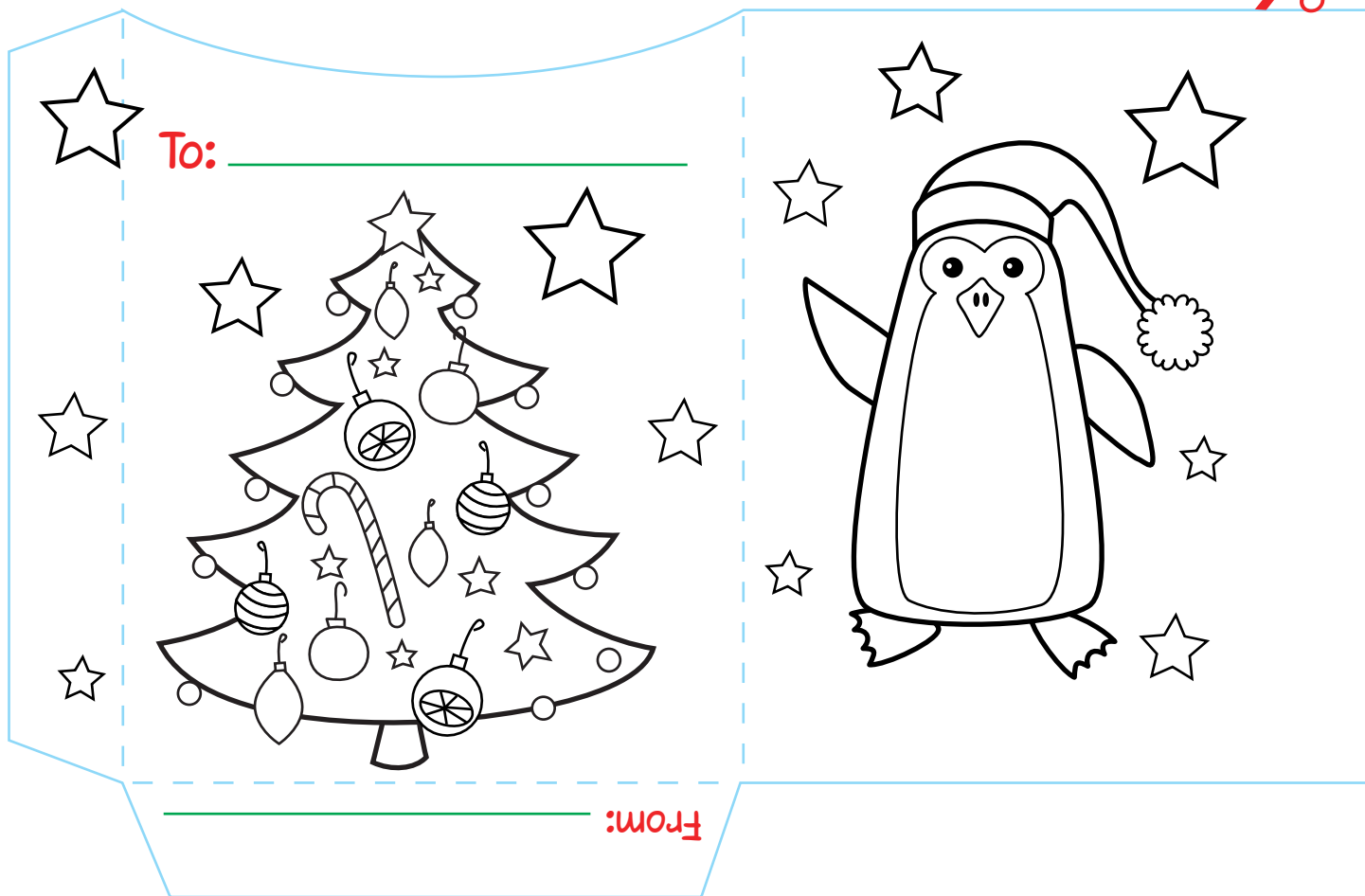
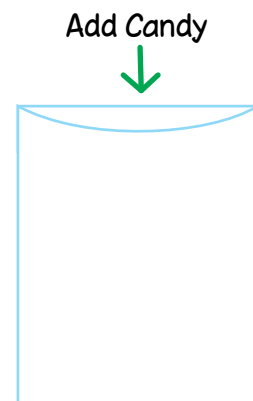
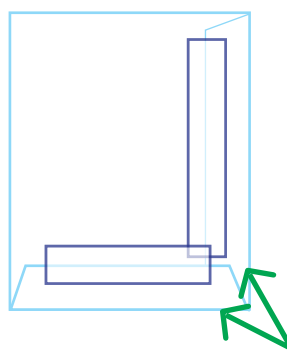
Color the art below. Fill in the to and from and then ask a grown-up to help cut and assemble the envelope. Then fill it with yummy treats!

You can print as many as you like. **Page 2** has more designs!
This project works best printed on thicker paper.



Fold towards the back

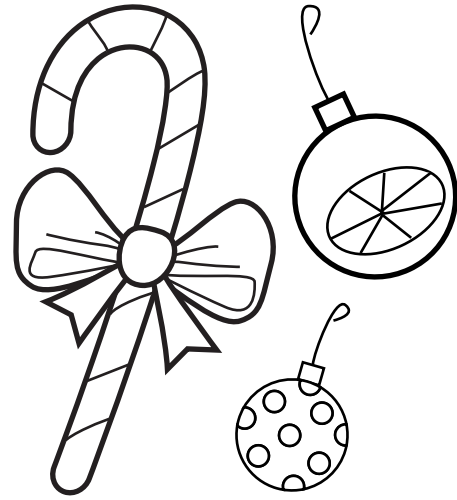
Fold on the dotted lines



To: _____



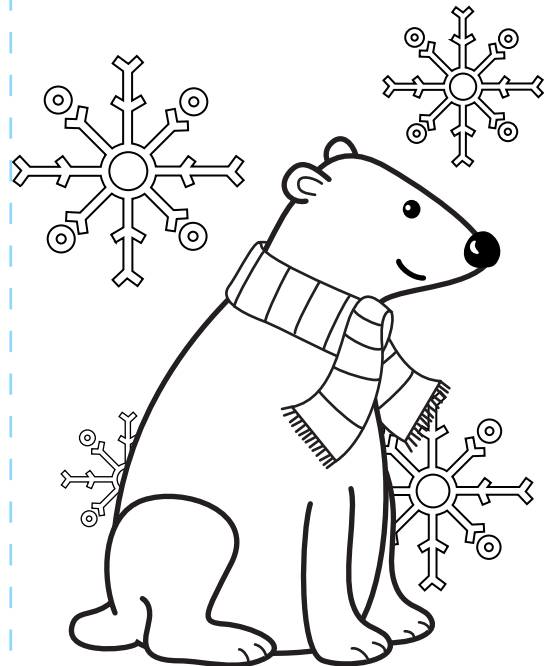
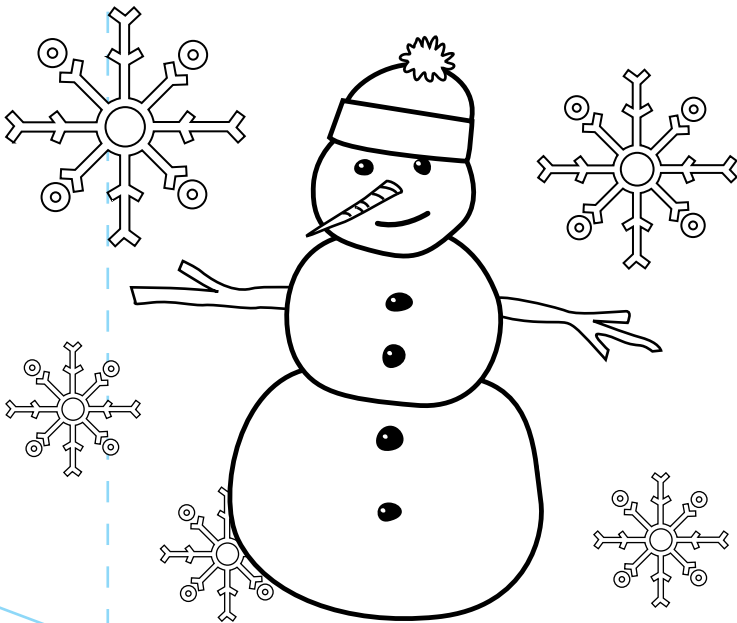
MERRY
CHRISTMAS



From: _____



To: _____



From: _____