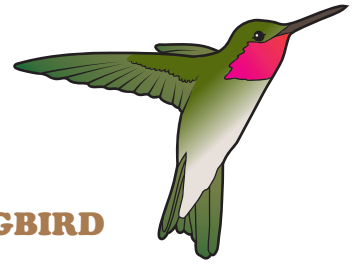


All About Our Earth's Ecosystems!

CHAPARRAL

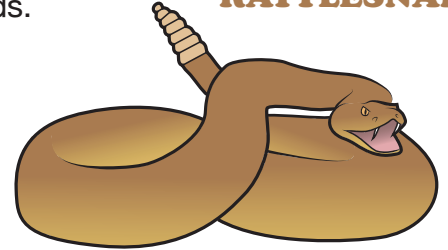


HUMMINGBIRD

About Chaparral:

Chaparral is a dry hot ecosystem that is also called Mediterranean. Some chaparral can be found on most continents. Generally temperatures are hot, and winters are mild, but it can get very hot (100°F) or below freezing (30°F). Plants and animals here are adapted to dryness, and are similar to those found in deserts and grasslands. Common plants include several types of oak, cacti, sagebrush, yucca, olive trees, and manzanita. Animals include rabbits, deer, foxes, skunk, lynx, mountain lion, coyotes and rattlesnakes. Many kinds of birds also make their home in chaparral including quail, hummingbirds, and roadrunners.

RATTLESNAKE



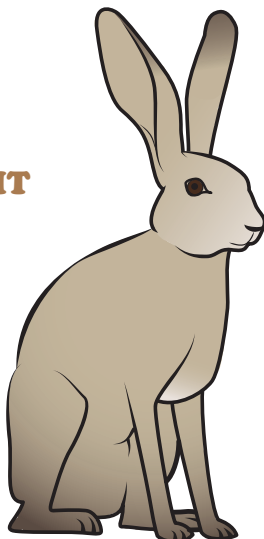
Chaparral Stats:

- Fires are frequent in chaparral because of the hot dry climate. Some plants have adapted to need fires to reproduce. Their seeds will only sprout after a fire.
- Chaparral will only get 10-17" of rain each year, mostly in the winter.
- Mediterranean chaparral is home to many popular cooking herbs such as oregano, thyme, and rosemary.
- Many animals in chaparral are nocturnal to avoid the hot daytime temperatures. This makes it easier for them to conserve energy and water.
- Lots of chaparral areas can be found in central and southern California in the western US.

Word Search

N	A	J	G	T	L	T	A	O	K	F	R	J	S	K
E	P	O	N	R	P	A	N	H	J	A	K	L	R	
C	O	Y	O	T	E	L	L	U	K	C	R	P	A	
I	N	U	L	A	T	D	E	R	M	I	G	I	E	T
A	E	I	I	N	N	O	K	A	M	N	H	O	J	T
L	M	T	V	R	K	A	U	M	I	E	O	P	T	L
E	T	K	E	O	I	K	O	G	N	H	T	W	K	E
J	A	K	E	S	E	H	P	O	G	S	E	K	A	S
A	O	A	P	G	R	M	G	O	B	I	F	L	I	N
U	A	I	U	W	N	G	N	F	I	R	E	S	R	A
R	J	L	Y	N	X	A	E	C	R	A	C	B	O	K
E	B	E	N	G	T	A	U	O	D	N	A	I	N	E
N	E	M	A	N	Z	A	N	I	T	A	T	A	M	P
M	U	L	R	I	O	D	E	A	O	J	D	U	N	L

JACKRABBIT



Find the chaparral terms below in the word search. They can be horizontal or vertical.

- | | |
|----------------|----------------|
| 1) COYOTE | 5) RATTLESNAKE |
| 2) HUMMINGBIRD | 6) MANZANITA |
| 3) OLIVE | 7) OAK |
| 4) LYNX | 8) FIRES |