

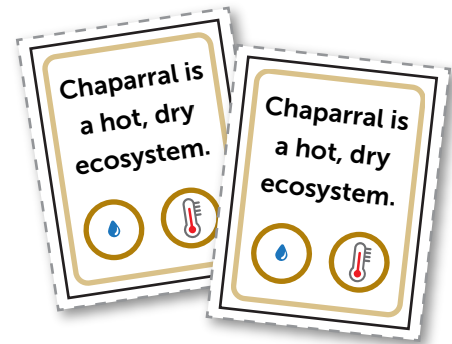
Chaparral Memory

Instructions

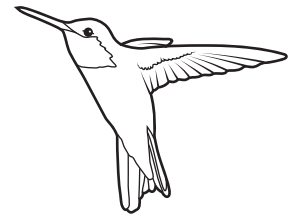
This is a two-player game, so find a buddy or parent who can play with you.

Read About Chaparral, below. Next, cut out the fact cards on the following page. There are 11 matching pairs of cards, all about the chaparral biome. *There are three cards that are not about the chaparral biome, and do not have a matching card.*

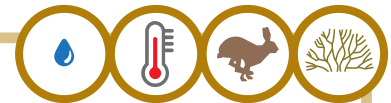
Place all the cards face down on a flat surface. The youngest player begins by picking two cards. If the cards match, the player gets to keep the cards, and gets to go again. If the cards don't match, they should be put back in the same spot, face down, and it's the other player's turn. The player with the most pairs at the end of the game wins.



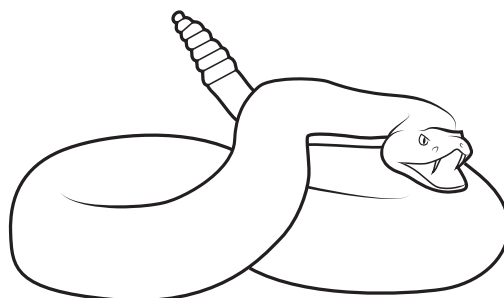
Example: *If you picked both of these cards, you would receive one point for having a matching pair about the chaparral biome. You would then get to go again.*



About Chaparral:



Chaparral is a dry, hot ecosystem that is also called "Mediterranean." Some chaparral can be found on most continents. Generally, temperatures are hot and winters are mild, but it can get very hot (100°F) or below freezing (30°F). Plants and animals here are adapted to dryness, and are similar to those found in deserts and grasslands. Common plants include several types of oak, cacti, sagebrush, yucca, olive trees, and manzanita. Animals include rabbits, deer, foxes, skunk, lynx, mountain lion, coyotes and rattlesnakes. Many kinds of birds also make their home in chaparral including quail, hummingbirds, and roadrunners.



Plants and animals that live in the chaparral biome are adapted to dryness.



Plants and animals that live in the chaparral biome are adapted to dryness.



Chaparral will only get 10 to 17 inches of rain.



Chaparral will only get 10 to 17 inches of rain.



Many of the animals in the chaparral are nocturnal (they sleep at night) because it is so hot during the day.



Rabbits, deer, foxes, skunk, lynx, mountain lions, coyotes and rattlesnakes all live in the chaparral.



Rabbits, deer, foxes, skunk, lynx, mountain lions, coyotes and rattlesnakes all live in the chaparral.



Animals that live in the chaparral know how to save energy and water so they can stay alive.



Animals that live in the chaparral know how to save energy and water so they can stay alive.



Many of the animals in the chaparral are nocturnal (they sleep at night) because it is so hot during the day.



Many kinds of birds such as hummingbirds, quail and roadrunners live in the chaparral.



Many kinds of birds such as hummingbirds, quail and roadrunners live in the chaparral.



The tundra is the coldest biome.



There are not many trees in the grassland biome.



There are many plants and animals found in the rainforest biome.

