

Name _____

Date _____

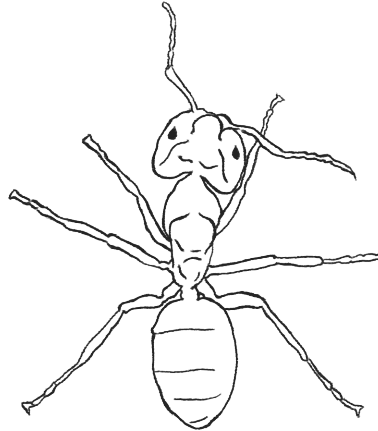
BUG AND SPIDER IDENTIFICATION

Learn some fun facts about common insects and arachnids as you color them in. Insects have six legs, and arachnids have eight legs. Then, turn to page two to record illustrations and observations of your own.



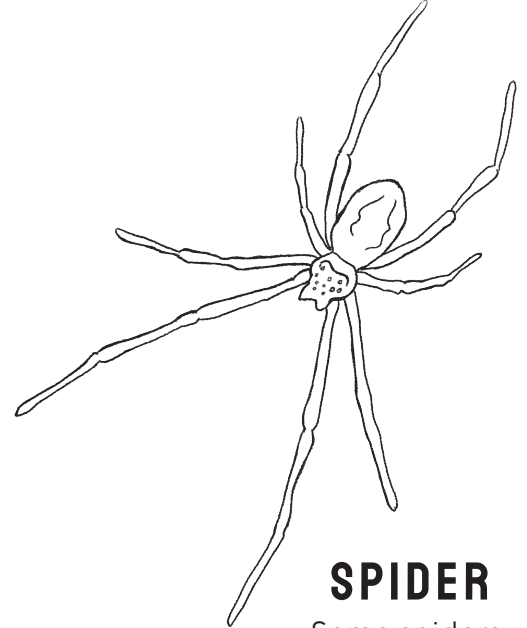
BEE

Bees help plants grow by spreading their pollen around to other plants.



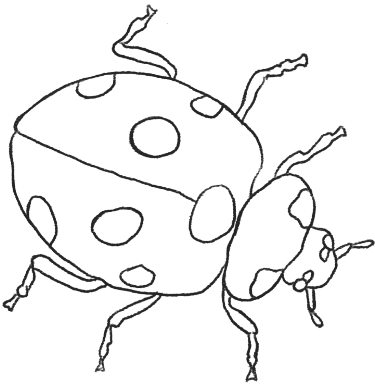
ANT

Ant colonies have one queen who lays thousands of eggs.



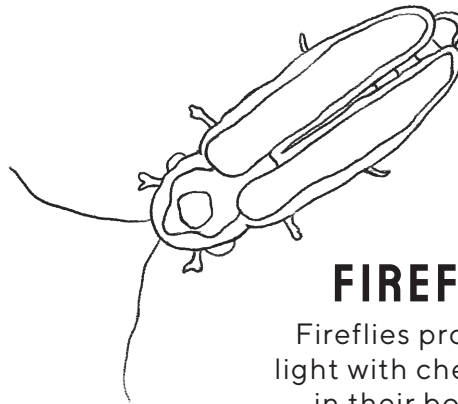
SPIDER

Some spiders build web communities where up to 50,000 spiders may live.



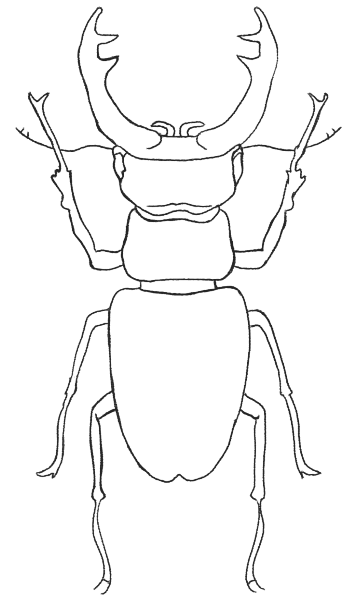
LADYBUG

Ladybugs protect crops by consuming plant-eating insects like aphids.



FIREFLY

Fireflies produce light with chemicals in their bodies.

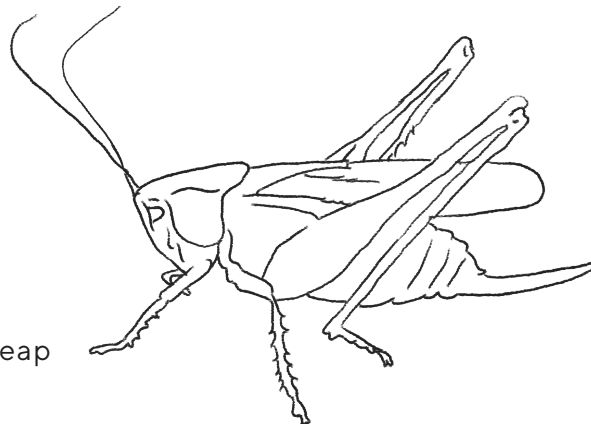


STAG BEETLE

The large antlers on a stag beetle are really mandibles, which are its jaws.

GRASSHOPPER

An adult grasshopper can leap 10 times its length.



Name _____

Date _____

BUG AND SPIDER IDENTIFICATION

Find two insects or arachnids that you like and draw them below.
Then write down one or two observations about each one in the lines provided!

This section contains two sets of horizontal lines for writing observations. Each set consists of a solid top line, a dashed middle line, and a solid bottom line.

This section contains two sets of horizontal lines for writing observations, identical in structure to the first section.