

Animal Coverings

Animals have different features that help them to survive in different places. These features (also called body coverings) include fur or hair, shells, scales, skin, and feathers.

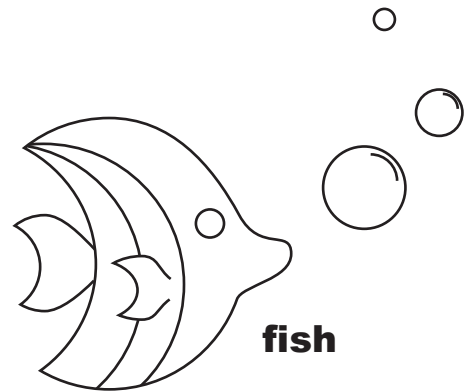
Can you find the correct body covering for each animal below?

If the animal is covered with **fur**, color it **orange**.

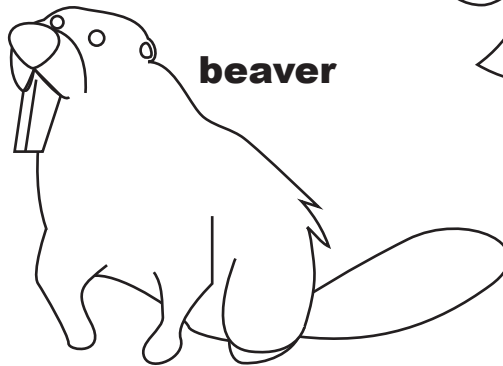
If the animal is covered by **scales**, color it **green**.

If the animal has **feathers**, color it **blue**.

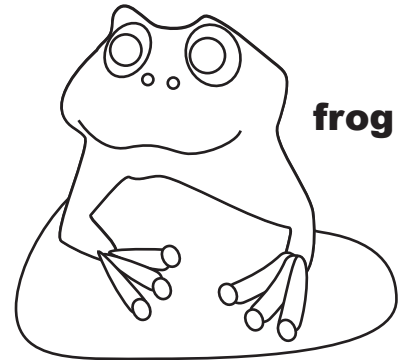
If the animal has **skin**, color it **pink**.



bird



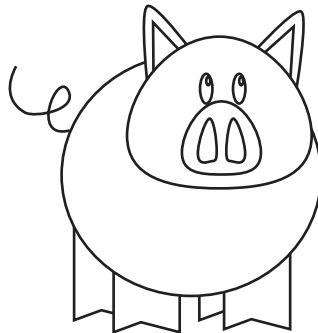
beaver



frog



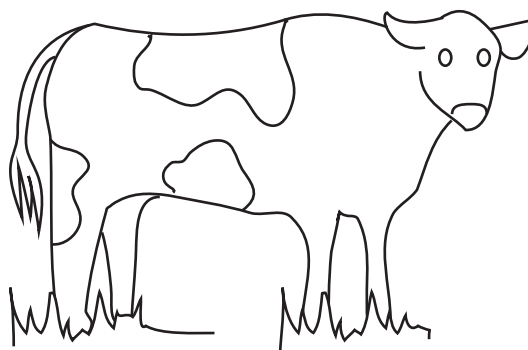
skunk



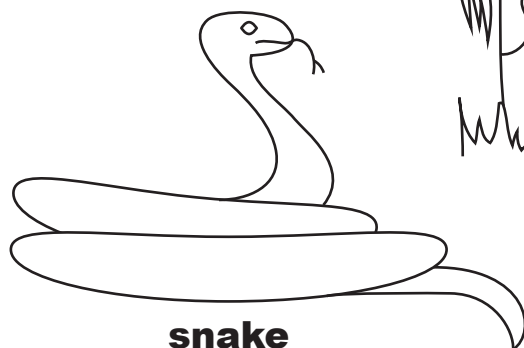
pig



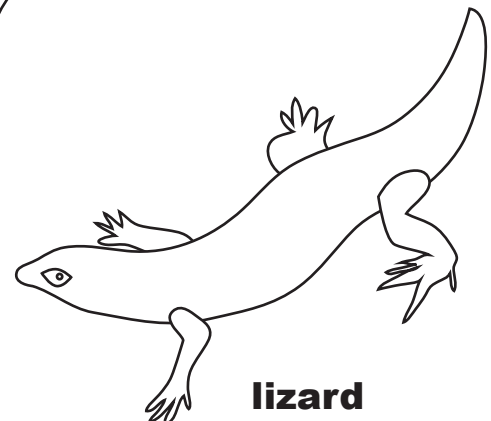
bat



cow



snake



lizard