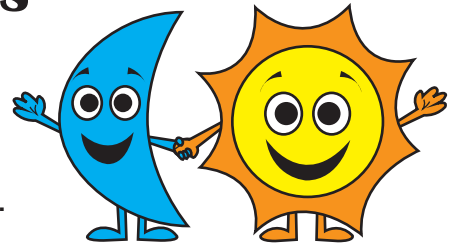


Name: \_\_\_\_\_

Date: \_\_\_\_\_

## Awesome Analogies

**Analogies** compare two things that are mostly different, but share some of the same traits. These analogies are like puzzles. To understand an analogy, think about how the words on each side of the colons relate to each other.



**moon : night :: sun : day**

The colons represent words, so when you read it aloud, it says: *moon is to night as sun is to day*. In this case, the relationship described is what you see in the night sky versus what you see during the day.

---

**Directions:** Use the word bank to complete the analogies.

1. feather : \_\_\_\_\_ :: fur : dog
2. gas : car :: electricity : \_\_\_\_\_
3. \_\_\_\_\_ : oven :: bedroom : bed
4. bow : arrow :: \_\_\_\_\_ : ball
5. near : far :: on : \_\_\_\_\_
6. gray : black :: \_\_\_\_\_ : red
7. \_\_\_\_\_ : cut :: pencil : write
8. calf : \_\_\_\_\_ :: fawn : deer
9. sing : sang :: \_\_\_\_\_ : sat
10. wolf : \_\_\_\_\_ :: fish : school

### Word Bank

pink  
bat  
sit  
kitchen  
pack  
bird  
cow  
television  
off  
scissors

---

**Directions:** Write your own analogies to compare each of the following things.

11. student, teacher \_\_\_\_\_
12. car, boat \_\_\_\_\_