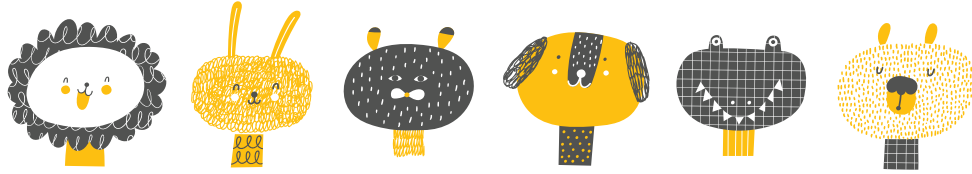


Syllables: **Animal Words**

A syllable is a word or part of a word that is one beat long. For example:

cat has **1** syllable, monkey has **2** syllables, and elephant has **3** syllables



Part 1. Practice counting syllables in the names of different kinds of animals.

Write in the names of 5 animals. Read each name out loud, clapping as you count each syllable.

Animal	Syllable 1	Syllable 2	Syllable 3	Total
elephant	el	e	phant	3

Part 2.

1. Write the name of your pet (or a pet you know): _____

How many syllables are in this pet's name? _____

2. Write the name of a cartoon animal: _____

How many syllables are in this animal's name? _____