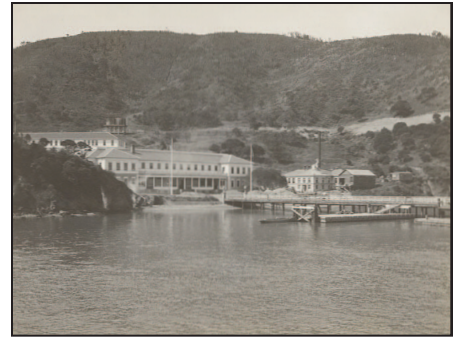


ANGEL ISLAND TEST

Interview questions at Angel Island often were a lot different than those asked at Ellis Island. Immigration officials on the west coast were worried that too many immigrants were being let into the country. Their solution was to ask questions that were confusing and difficult. If immigrants had trouble answering the questions, they were at risk of being deported back to their home countries.

Angel Island interview questions were often about an arriving immigrant's relatives. Immigration officers believed that if an immigrant was who he claimed to be, he should know silly and often even ridiculous details about relatives he may have never even met.

Imagine you are an immigrant who is about to be questioned by the Angel Island immigration officers. Think of a relative you haven't seen in a while – maybe an uncle or a grandparent. See if you can answer these questions about that relative.



Angel Island Immigration Station

1. How many steps are there to the front door of your relative's house?

2. Who lives in the third house on the second street of your relative's town?

3. How long have your relative's next door neighbors lived in their house?

4. There are two other families on the street that your relative lives on. Who are they and where do they live?

~Were you able to answer any of these questions? If you haven't seen your relative in a long time, it would be practically impossible to know any of the answers. That was the point. The Angel Island immigration officers did not really expect many people to pass the test. How do you think this made the immigrants feel? Use the back of this paper to answer the question.