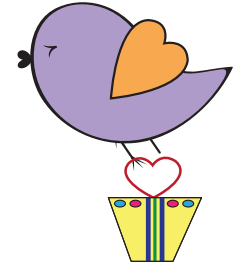
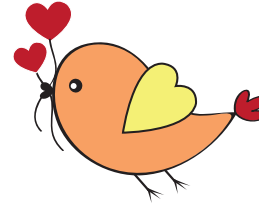
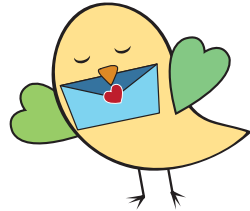
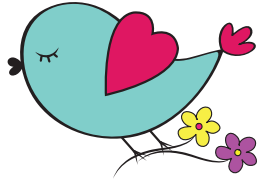


# Valentine Gift Multiplication

Mary's pet birds are bringing her gifts for Valentine's Day. Solve the problems for each bird and add up the answers to find out which bird reaches Mary first.



$5 \times 2 = \underline{\hspace{2cm}}$

$3 \times 3 = \underline{\hspace{2cm}}$

$6 \times 6 = \underline{\hspace{2cm}}$

$8 \times 3 = \underline{\hspace{2cm}}$

$7 \times 1 = \underline{\hspace{2cm}}$

$6 \times 2 = \underline{\hspace{2cm}}$

$5 \times 8 = \underline{\hspace{2cm}}$

$5 \times 5 = \underline{\hspace{2cm}}$

$4 \times 3 = \underline{\hspace{2cm}}$

$7 \times 7 = \underline{\hspace{2cm}}$

$4 \times 9 = \underline{\hspace{2cm}}$

$3 \times 1 = \underline{\hspace{2cm}}$

$2 \times 2 = \underline{\hspace{2cm}}$

$9 \times 0 = \underline{\hspace{2cm}}$

$3 \times 7 = \underline{\hspace{2cm}}$

$0 \times 6 = \underline{\hspace{2cm}}$

$8 \times 9 = \underline{\hspace{2cm}}$

$5 \times 1 = \underline{\hspace{2cm}}$

$9 \times 2 = \underline{\hspace{2cm}}$

$6 \times 8 = \underline{\hspace{2cm}}$

$7 \times 6 = \underline{\hspace{2cm}}$

$8 \times 8 = \underline{\hspace{2cm}}$

$3 \times 3 = \underline{\hspace{2cm}}$

$4 \times 4 = \underline{\hspace{2cm}}$

$1 \times 5 = \underline{\hspace{2cm}}$

$3 \times 5 = \underline{\hspace{2cm}}$

$2 \times 8 = \underline{\hspace{2cm}}$

$9 \times 6 = \underline{\hspace{2cm}}$

TIME:                     

TIME:                     

TIME:                     

TIME:                     

