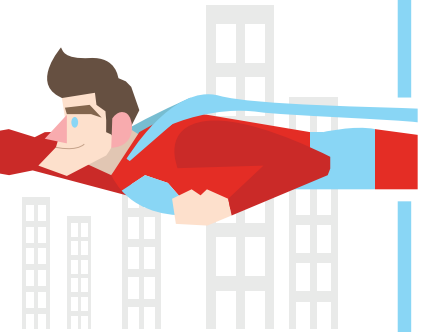
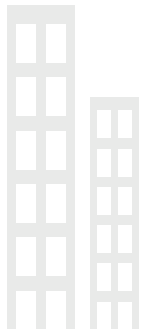


# Advanced Grammar: Suffixes #2

A **suffix** is added to a root word to change the meaning of the word.

Draw a line from the **suffix** to its **meaning**. **Hint:** If you're stuck, think of a word you know that ends with that suffix.

- |                  |                                |
|------------------|--------------------------------|
| 1. -ment         | characterized by/inclined to   |
| 2. -ist          | believes or does               |
| 3. -y            | characteristic or way of being |
| 4. -able         | without                        |
| 5. -est          | worthy of, able to             |
| 6. -ful or -full | more than                      |
| 7. -ness         | is like                        |
| 8. -ly           | action or state                |
| 9. -less         | full of                        |
| 10. -er          | the most                       |



**Add a suffix to each root word so that it matches the new definition below.**

Root words				Suffixes		
part	real	bicycle	hurt	-ist	-ful	-ly

A person who rides a bike \_\_\_\_\_ extremely \_\_\_\_\_

Something said in anger is \_\_\_\_\_ almost as much \_\_\_\_\_

**Circle words with suffixes from the list above.**

On the warmest day of the year, a friendly artist brought excitement to our school. She asked our teachers to gather us in a comfortable area, like the library. She had a softness in her voice when she told us about her wonderful paintings. It made me so interested! My favorite painting showed a fearless hero looking up at a tall building. He was shorter than all the other heroes in the painting, but he didn't look scared. Another painting I liked showed an oily car engine. It was full of detail.