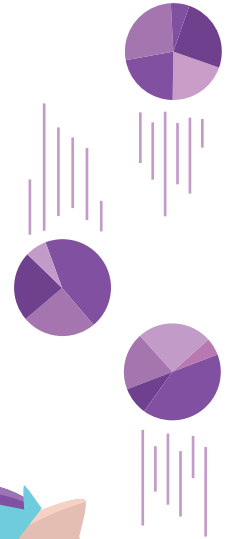


Skills Practice

ADDING IMPROPER FRACTIONS

Practice your fraction arithmetic skills by adding the following improper fractions. Be sure to show your work and simplify your answers.



$$\frac{22}{3} + \frac{3}{2} = \frac{53}{6}$$

$$\frac{44}{6} + \frac{9}{6} = \frac{53}{6}$$

$$\frac{23}{7} + \frac{7}{6} = \underline{\hspace{2cm}}$$

$$\frac{17}{6} + \frac{14}{5} = \underline{\hspace{2cm}}$$

$$\frac{16}{3} + \frac{19}{5} = \underline{\hspace{2cm}}$$

$$\frac{11}{4} + \frac{8}{7} = \underline{\hspace{2cm}}$$

$$\frac{33}{2} + \frac{24}{5} = \underline{\hspace{2cm}}$$

$$\frac{12}{5} + \frac{24}{7} = \underline{\hspace{2cm}}$$