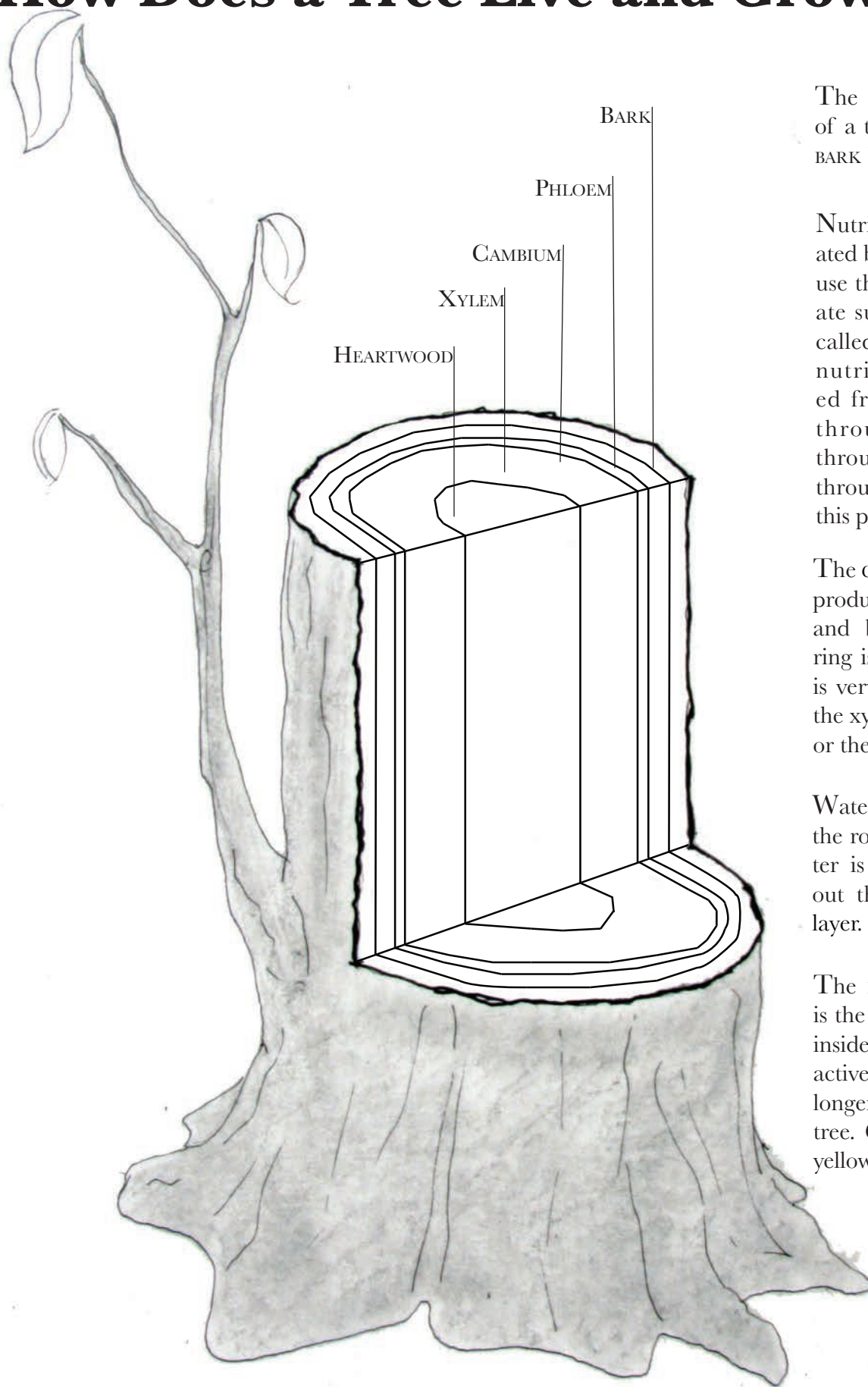


# How Does a Tree Live and Grow?



The outer, protective layer of a tree is **BARK**. Color the **BARK** brown.

Nutrients, or food, are created by a tree's leaves. They use the sun's energy to create sugars. This process is called photosynthesis. The nutrients are transported from the leaves down through the stems and throughout the whole tree through the **PHLOEM**. Color this part red.

The **CAMBIUM** layer of a tree produces new heartwood and bark cells. One new ring is created each year. It is very thin and is between the xylem and phloem. Color the **CAMBIUM** layer green.

Water is absorbed through the roots of a tree. The water is transported throughout the tree in the **XYLEM** layer. Color this part blue.

The **HEARTWOOD** of a tree is the older part. It is found inside and is considered inactive. This means it is no longer a living part of the tree. Color the **HEARTWOOD** yellow.