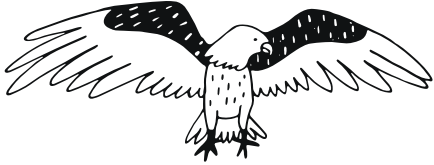


State Capital Word Search #5

Find the 10 U.S. state capitals listed below in the word search puzzle.
Then add their names to the correct label on the map below.



State Capitals

- | | |
|------------|----------------|
| Austin | Nashville |
| Charleston | Olympia |
| Cheyenne | Pierre |
| Madison | Richmond |
| Montpelier | Salt Lake City |

| | | | | | | | | | | | | | | |
|---|---|---|---|---|---|---|---|---|---|---|---|---|---|---|
| M | Y | D | O | G | W | A | S | P | I | E | R | R | E | R |
| E | L | V | I | S | N | A | S | H | V | I | L | L | E | E |
| A | U | S | T | I | N | O | C | H | E | Y | E | N | N | E |
| V | E | R | S | A | L | T | L | A | K | E | C | I | T | Y |
| W | H | O | I | S | M | O | N | T | P | E | L | I | E | R |
| V | I | G | I | L | R | I | C | H | M | O | N | D | P | O |
| C | O | L | Y | M | P | I | A | N | S | A | R | I | N | A |
| C | H | A | R | L | E | S | T | O | N | O | N | M | O | R |
| J | A | M | E | S | M | A | D | I | S | O | N | E | S | Q |