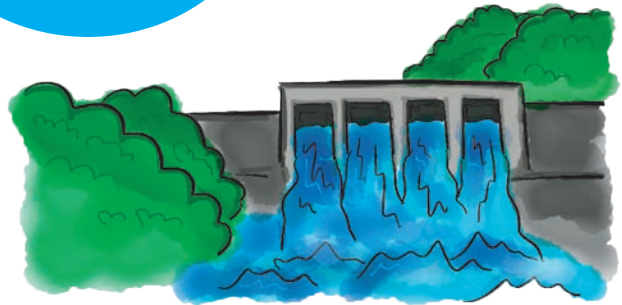


WHAT IS WATER ENERGY?

Water energy, also known as hydro power, is generated by moving water. The kinetic energy in moving water can be transferred into electricity. Here's how electricity is made at a hydroelectric power plant.

STEP 1

A dam is built to collect water (usually on a large river).



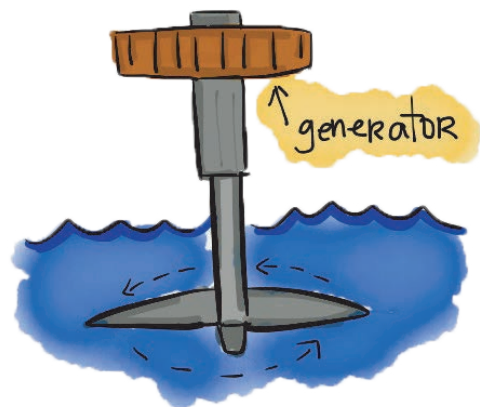
STEP 2

A gate is opened in the dam to allow water to rush into a large pipe. The pipe is sloped so that the water moves quickly, creating large amounts of kinetic energy.



STEP 3

The rushing water moves blades, which in turn sends power to a generator.



★ THINK AND RESPOND ★

Could a hydroelectric power plant be built on a lake? Explain why or why not.

Yes, because a lake can be a large body of water.
