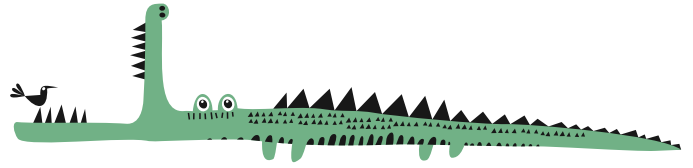


# What Is a Metaphor?

A **metaphor** compares two things by saying that one of them is the other. Unlike similes, metaphors don't use the word like or as.



**Example:** If you wake my sister too early, she is a snapping crocodile.

**Directions:** Find the metaphors! Shade in the logs that contain a metaphor.

The tree's branches were sharp needles.

On some summer days, my room feels like an oven.

The grapes were small green balloons.

The car engine was a lion's roar.

He swam across the swimming pool like a dolphin.



The plane was as fast as a cheetah.

The tired girl was a slow turtle.

His voice was as deep as a whale sound.

My bike's tire is as flat as a pancake.

The baby is sweet like pie.

My garden is nature's art.

Your eyes are bright blue gems.

