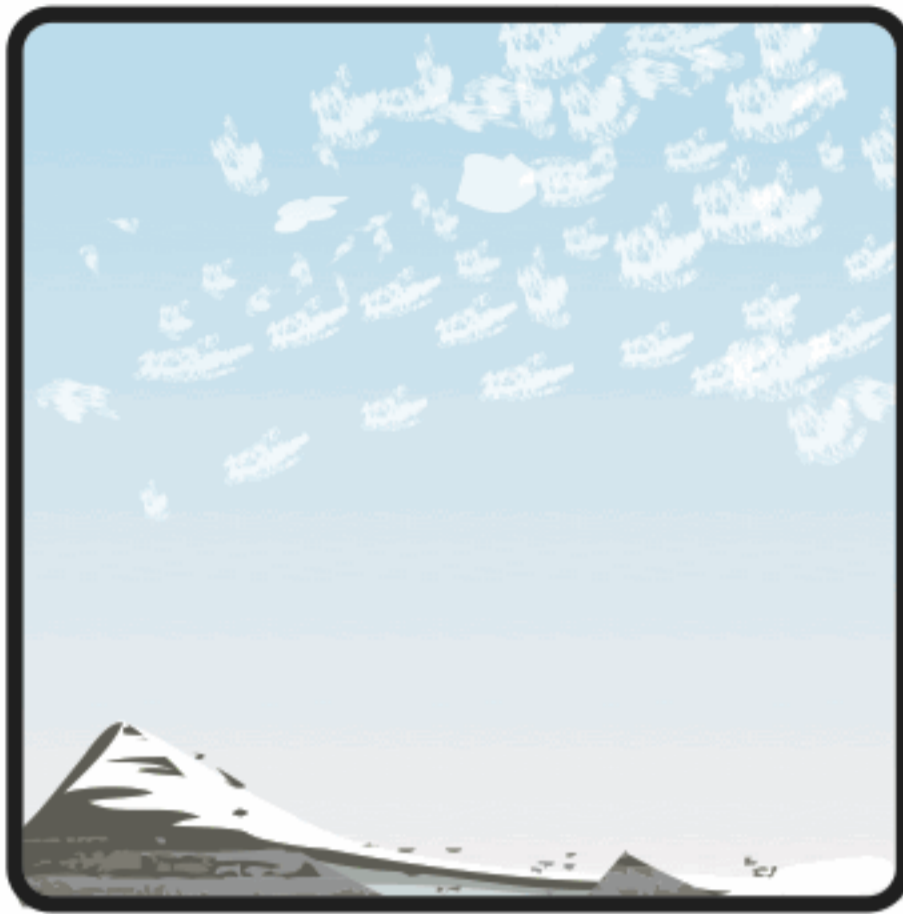


# LABEL THE CLOUDS

**DIRECTIONS:** Label the types of clouds based on the definitions below.



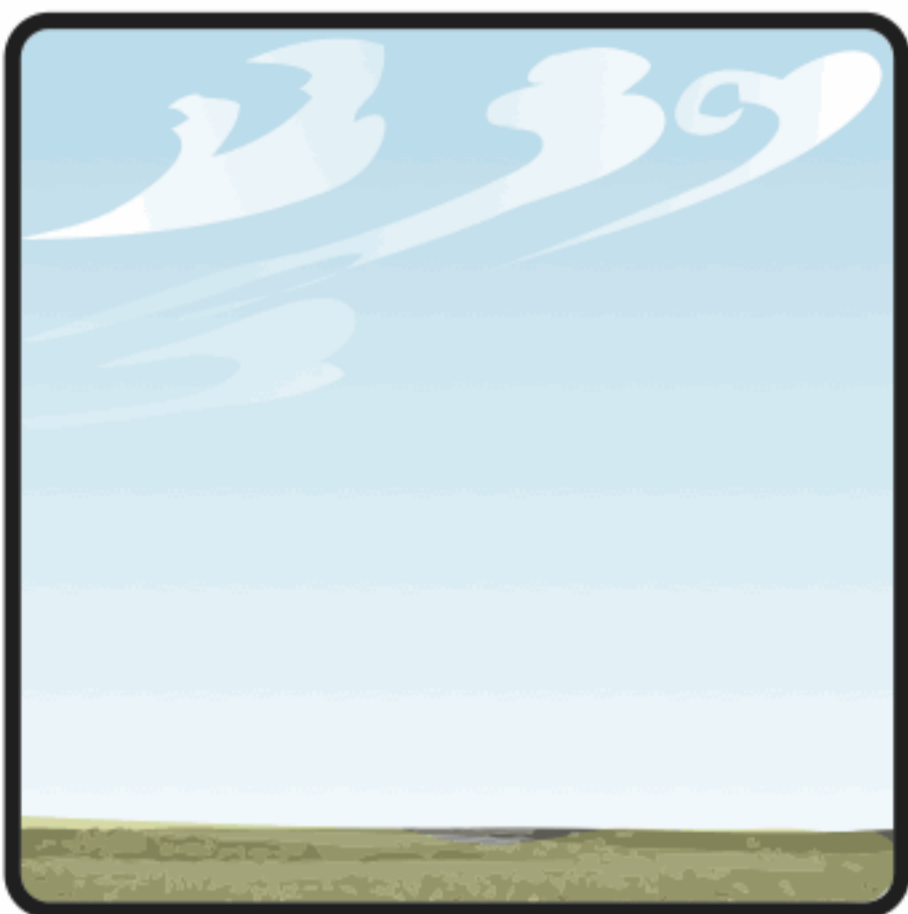
Stratus



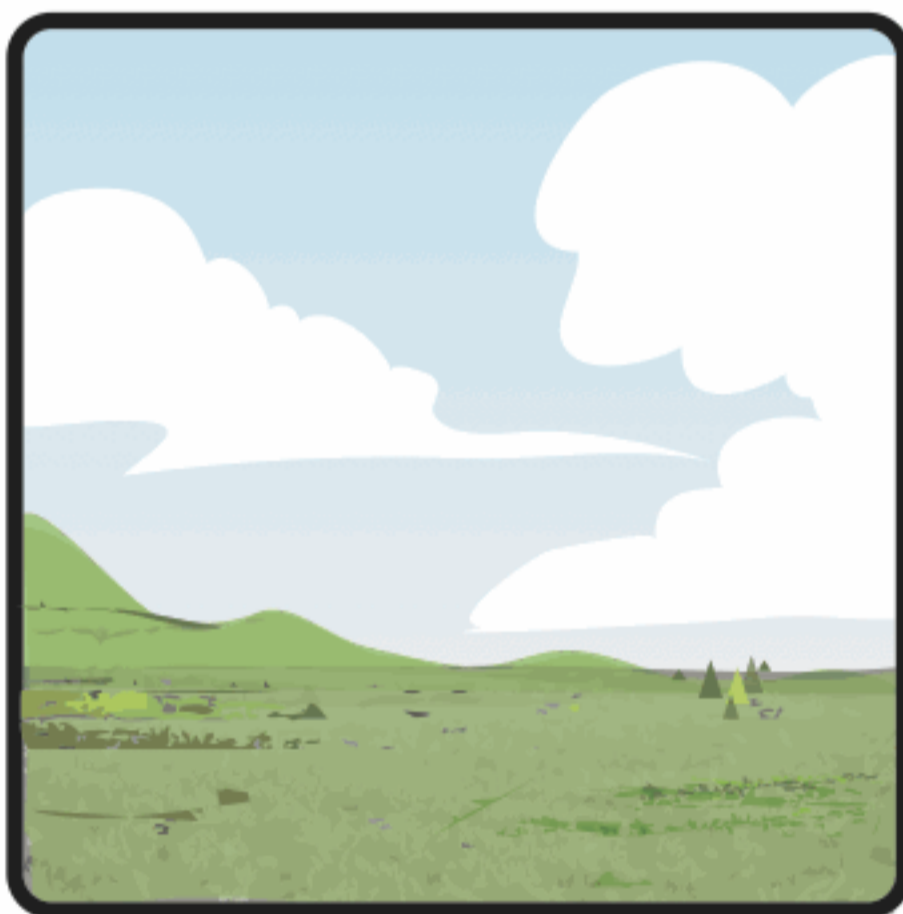
Cirrocumulus



Cirrostratus



Cirrus



cumulus



nimbostratus

**CIRRUS** - High-altitude feathery thin, white, curly shaped clouds.

**CIRROCUMULUS** - High-altitude, small, wispy, patchy, puffy clouds that form in rows.

**CIRROSTRATUS** - High-altitude thin wispy clouds. When they cover the sky, they are so thin that it looks like a white sheet.

**CUMULUS** - Low-altitude fluffy white clouds, typical of hot weather.

**STRATUS** - Low-altitude horizontal, grey, wispy clouds.

**NIMBOSTRATUS** - Low-altitude dark rain clouds.