

a.m. Or **p.m.**

a.m. means "before midday" (12 o'clock at night to 12 o'clock noon).

p.m. means "after midday" (12 o'clock noon to 12 o'clock at night).

Read the sentences and write whether the events happened in the a.m. or p.m. See the example.



Tylor goes to school at 7 o'clock every morning.

Answer

a.m.



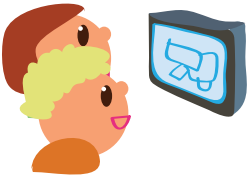
At 9 o'clock, Neil fried scramble eggs for his breakfast.

a.m.



We come back from school in the afternoon.

p.m.



We watch television after dinner every day.

p.m.



The plane will take off before noon.

a.m.



I love bedtime stories.

p.m.



What about a campfire?

p.m.