

# Sub-Genre Specific Traits Across Texts

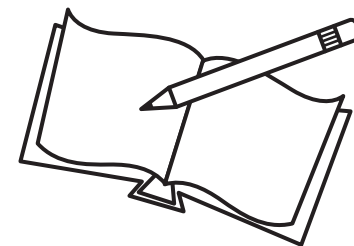
Name: \_\_\_\_\_

Date: \_\_\_\_\_

A **Genre** is a specific literary category for texts like fiction and nonfiction.

**Sub-genres** are kinds of fiction or nonfiction, with specific traits, or stylish features, unique to each sub-category.

A **sub-genre** of fiction example is mystery, having traits including: unexplained events, sleuths and secrets.



Compare three texts in the same **sub-genre**. Note a specific trait to the genre and list related details for each text.

<b>Comparison Text Titles</b> 1) <u>Alice in Wonderland</u> 2) <u>Peter Pan</u>		<b>Authors</b> 1) <u>Lewis Carroll</u> 2) <u>J.M. Barrie</u>
<b>Sub-Genre:</b> Fantasy	<b>Sub-Genre Specific Trait:</b> Magic	<b>Another Book Like These:</b> Author: <u>Roald Dahl</u> Title: <u>James and the Giant Peach</u>
<b>Sub-Genre specific trait details from Text 1:</b> Eats different things to make her grow or shrink	<b>Sub-Genre specific trait details from Text 2:</b> Magic dust enables children to fly Tinkerbell is a flying faerie None of the kids ever grow up in Neverland	<b>Sub-Genre specific trait details from this text:</b> A giant rhinoceros runs through the sky A peach grows to a monstrous size (Need more space? Attach additional sheets as needed)