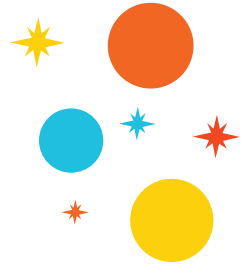


SQUARE ROOTS OF PERFECT SQUARES



Evaluate the square root of each perfect square.

1. $\sqrt{9} = \underline{3}$

2. $\sqrt{100} = \underline{10}$

3. $\sqrt{36} = \underline{6}$

4. $\sqrt{16} = \underline{4}$

5. $\sqrt{1} = \underline{1}$

6. $\sqrt{25} = \underline{5}$

7. $\sqrt{144} = \underline{12}$

8. $\sqrt{81} = \underline{9}$

9. $\sqrt{64} = \underline{8}$

10. $\sqrt{400} = \underline{20}$

11. $\sqrt{121} = \underline{11}$

12. $\sqrt{225} = \underline{15}$

13. $\sqrt{900} = \underline{30}$

14. $\sqrt{196} = \underline{14}$

15. $\sqrt{49} = \underline{7}$

16. $\sqrt{289} = \underline{17}$

17. $\sqrt{625} = \underline{25}$

18. $\sqrt{324} = \underline{18}$