

## 9. SPACED-OUT SCRAMBLE

The order of the planets, beginning closest to the Sun:

Mercury

Venus

Earth

Mars

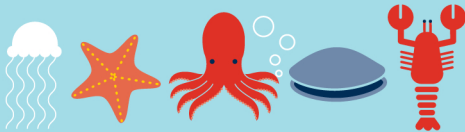
Jupiter

Saturn

Uranus

Neptune

## 10. SPINE OR NO SPINE?



Mary's collection should include the jellyfish, starfish, octopus, clam, and lobster.

## 11. MINGLING SCIENTISTS

Amy the Astronomer: **stars**

Marty the Meteorologist: **weather**

Olivia the Ornithologist: **birds**

Gene the Geologist: **Earth**

Ernesto the Entomologist: **insects**