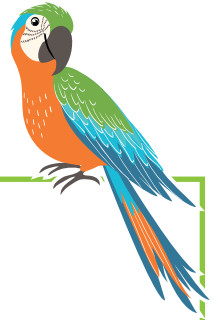


Solve One-Step Inequalities #3

Solve each inequality. Then graph the solution set on the number line.



$$6w < 18$$

$$w < 3$$



$$b + 5 \geq -2$$

$$b \geq -7$$



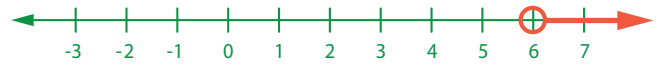
$$\frac{r}{-3} \geq 7$$

$$r \leq -21$$



$$z - 64 > -58$$

$$z > 6$$



$$9.1 + g \geq -1.9$$

$$g \geq -11$$



$$4.5s \geq 36$$

$$s \geq 8$$



$$d + 81 > 23$$

$$d > -58$$



$$-3.2y > 12.8$$

$$y < -4$$



$$\frac{c}{-8} \geq -3$$

$$c \leq 24$$



$$k - 7.6 > 7.4$$

$$k > 15$$

