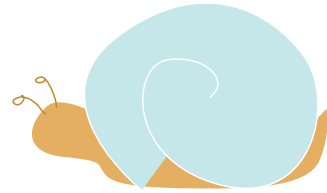


# Snail Division

Find the quotient.



$$\begin{array}{r} \boxed{3} \\ 3 \overline{)9} \end{array}$$

$$\begin{array}{r} \boxed{3} \\ 5 \overline{)15} \end{array}$$

$$\begin{array}{r} \boxed{1} \\ 4 \overline{)4} \end{array}$$

$$\begin{array}{r} \boxed{7} \\ 2 \overline{)14} \end{array}$$

$$\begin{array}{r} \boxed{8} \\ 5 \overline{)40} \end{array}$$

$$\begin{array}{r} \boxed{11} \\ 2 \overline{)22} \end{array}$$

$$\begin{array}{r} \boxed{6} \\ 3 \overline{)18} \end{array}$$

$$\begin{array}{r} \boxed{4} \\ 9 \overline{)36} \end{array}$$

$$\begin{array}{r} \boxed{8} \\ 3 \overline{)24} \end{array}$$

$$\begin{array}{r} \boxed{3} \\ 7 \overline{)21} \end{array}$$

$$\begin{array}{r} \boxed{4} \\ 2 \overline{)8} \end{array}$$

$$\begin{array}{r} \boxed{4} \\ 8 \overline{)32} \end{array}$$

$$\begin{array}{r} \boxed{4} \\ 4 \overline{)16} \end{array}$$

$$\begin{array}{r} \boxed{6} \\ 6 \overline{)36} \end{array}$$

$$\begin{array}{r} \boxed{10} \\ 3 \overline{)30} \end{array}$$

$$\begin{array}{r} \boxed{3} \\ 4 \overline{)12} \end{array}$$

$$\begin{array}{r} \boxed{5} \\ 2 \overline{)10} \end{array}$$

$$\begin{array}{r} \boxed{9} \\ 3 \overline{)27} \end{array}$$

$$\begin{array}{r} \boxed{5} \\ 1 \overline{)5} \end{array}$$

$$\begin{array}{r} \boxed{4} \\ 6 \overline{)24} \end{array}$$

