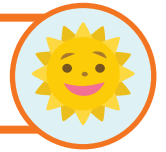




Prefixes at Guadalalaglass Elementary



Name: _____

Date: _____

Complete the story below with a word using a prefix from the following list:

dis-	means: opposite of, not
hyper-	means: over, above
mis-	means: wrongly
de-	means: off, down, away from,

Cynthia and I always pretend we're dis interested in group games at recess. I think it's because our sense of belonging is de activated. You see, we're twins and this is our first year at this school, Guadalalaglass Elementary. We're hyper sensitive to heights and equally allergic to words over four syllables. You heard me right: Guadalalaglass, Guadalalaglass, Guadalalaglass, Guadalalaglass... It's easy to mis pronounce if you say it seven times fast! Cynthia and I have tried. Oh yeah, I almost forgot to mention that our campus buildings are made entirely of transparent plexiglass snap-together bricks! Totally. You'd think somebody could dis assemble Guadalalaglass in a day or two. Cynthia's always suggesting we get all hyper focused one day and give it a go.

I remember when we first entered our classroom and Cynthia projected a look of complete dis trust. She was skeptical as I was a cynic. Upon our first glimpse of Guadalalaglass, we giggled at the thought that some poor architect had completely mis managed her construction budget. Our parents had heard about Guadalalaglass' school district's building rules being de regulated. It had been all over the news how Guadalalaglass recruited an army of cutting edge eco-building designers from the across the globe. Our parents, every bit of the eco-building warrior type designers, were impressed enough to demand we become learned Guadalalaglassians. However, Cynthia and I think Guadalalaglass Elementary could easily be mis taken as a shatterproof terror box learning experiment with kids involved! Case in point: Our first week in attendance, Cynthia and I spent each morning trying our best not to hyper ventilate while looking down at our classroom floor; on Guadalalaglass Elementary's thirty-fifth floor!