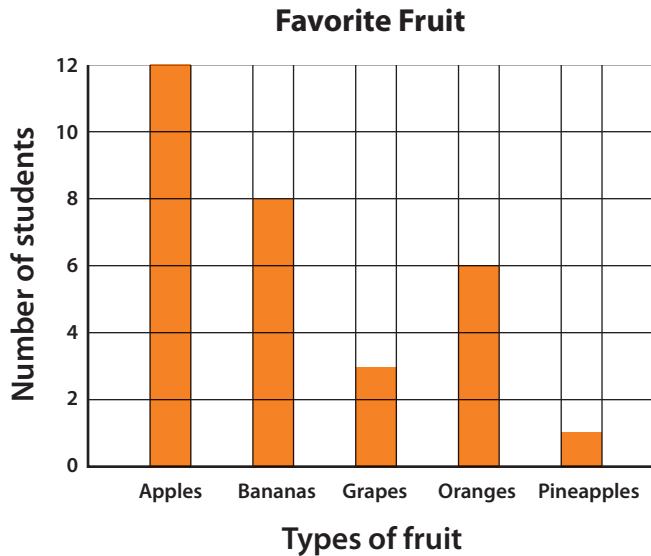


# Graph Practice

A **bar graph** uses bars to show data. A **picture graph** uses pictures to show data. Can you look at the graphs and understand what the bars and pictures mean?

**Directions:** Look at the information in the bar graph. Then, circle the correct answer.



1. How many more kids like apples than grapes?

- a. 12      b. 4      **c. 9**

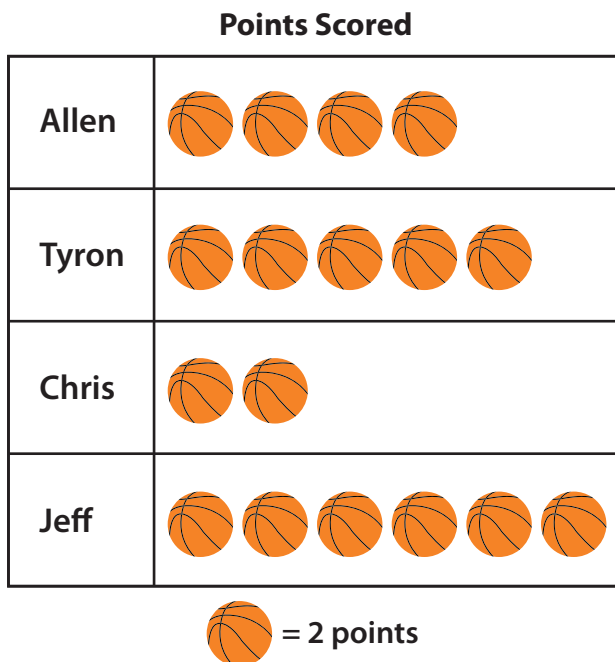
2. How many kids like apples and bananas?

- a. 20**      b. 15      c. 8

3. How many kids like oranges?

- a. 1      **b. 6**      c. 3

**Directions:** Look at the information in the picture graph. Then, circle the correct answer.



1. How many more points did Allen score than Chris?

- a. 8      **b. 4**      c. 2

2. How many points were scored in all?

- a. 34**      b. 17      c. 10

3. Who scored the most points?

- a. Chris      **b. Jeff**      c. Allen