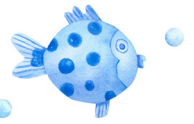


# Practice Expanding Linear Expressions #1



Expand each expression using the distributive property.

1.  $4(2x + 3)$

$8x + 12$

2.  $5(6h - 5)$

$30h - 25$

3.  $8(3a - 7)$

$24a - 56$

4.  $6(7d + 3)$

$42d + 18$

5.  $7(4q - 10)$

$28q - 70$

6.  $-2(12f + 8)$

$-24f - 16$

7.  $-5(9w - 3)$

$-45w + 15$

8.  $11(8v + 10)$

$88v + 110$

9.  $2(7x + 5y + 4)$

$14x + 10y + 8$

10.  $9(6c - 2d + 7)$

$54c - 18d + 63$

11.  $9\left(\frac{1}{3}f + 11g - 6\right)$

$3f + 99g - 54$

12.  $-3(9g - 8.4h + 4)$

$-27g + 25.2h - 12$

13.  $5(5.8p - 9.4r - 12)$

$29p - 47r - 60$

14.  $-10\left(\frac{1}{2}a - \frac{3}{5}b - 3\right)$

$-5a + 6b + 30$

15.  $6(8.7c - 12d - 6.5)$

$52.2c - 72d - 39$

16.  $-8\left(\frac{1}{4}w + \frac{1}{2}x + \frac{3}{8}\right)$

$-2w - 4x - 3$

17.  $4(9.3j + 7.5k - 10)$

$37.2j + 30k - 40$

18.  $12\left(\frac{1}{6}m - \frac{3}{4}n + \frac{2}{3}\right)$

$2m - 9n + 8$