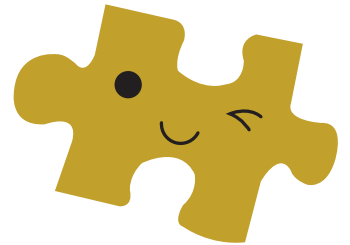


Name \_\_\_\_\_ Date \_\_\_\_\_

## Answer Key

# PLACE VALUE PUZZLE

Read each clue to help you figure out the eight-digit number.



1. Put the square root of 25 in the tens place.
2. Put the quotient of 21 divided by 7 in the hundred thousands place.
3. Put the square root of 9 in the hundreds place.
4. Put the solution to  $3 \times 10$  divided by 6 in the ten millions place.
5. Put the solution to 90 divided by 30 in the thousands place.
6. Put the sum to the problem  $\frac{10}{6} + \frac{26}{6}$  in the millions place.
7. Put the fourth smallest prime number in the ten thousands place.
8. Subtract the digit in the ten millions place from the one millions place and put it in the ones place.

Now enter the number into a calculator, turn it upside down and see what the doctor said when she was delivering a baby centipede.

15EELE95 "I see legs."