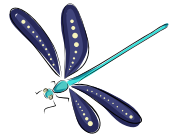


Perimeter on the Coordinate Plane #1



Plot, label, and connect the vertices listed for each problem to graph the shape on the coordinate plane. Then find the perimeter of the shape.

A (1, 1), **B** (1, 5), **C** (5, 5), **D** (5, 1)

Perimeter = 16 units

E (-7, 8), **F** (-7, 9), **G** (-1, 9), **H** (-1, 8)

Perimeter = 14 units

J (-4, -8), **K** (-4, -4), **L** (4, -4), **M** (4, -8)

Perimeter = 24 units

P (-9, -9), **Q** (-9, 6), **R** (-8, 6), **S** (-8, -9)

Perimeter = 32 units

W (7, -1), **X** (7, 8), **Y** (9, 8), **Z** (9, -1)

Perimeter = 22 units

T (-7, -2), **U** (-7, 4), **V** (-1, 4), **N** (-1, -2)

Perimeter = 24 units

