

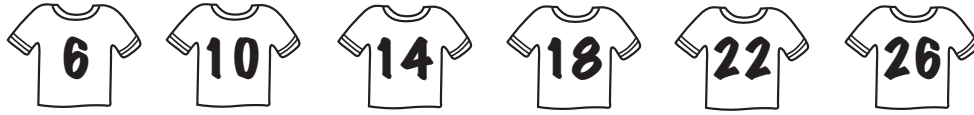
Name: _____

Date: _____

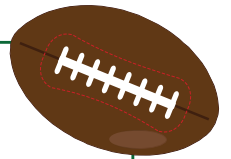
Answer Key

Number Sense: Complete the Pattern

Can you find the pattern in the numbers below?



The pattern is counting by 4s!



Part 1

Directions: Look at the numbers on each shirt. Find the pattern for each row, and fill in the numbers on the blank shirts.

1.						
2.						
3.						
4.						
5.						
6.						

Part 2

Directions: After you have completed each number pattern, color the shirts. If the number on the shirt is even, color the shirt green. If the number on the shirt is odd, color the shirt blue.

1. How many even-numbered shirts are there? 22

2. How many odd-numbered shirts are there? 14