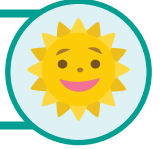




More Commas in a Sentence



Non-identifying clauses are normally separated by commas. Look at the example below and complete the exercises that follow.

Example:

Everyone went to the park.

Everyone, **which included the entire 5th grade class**, went to the park.

Answer Key

Note: Student answers will vary. The sentences below are correct examples.

Directions: Add a non-identifying clause to each sentence, with commas in the proper places.

1. I rode my bike to school in the rain.

I rode my bike, which had very skinny tires, to school in the rain.

2. Kelly Anne had the prettiest smile I've ever seen.

Kelly Anne, who always looked happy, had the prettiest smile I'd ever seen.

3. The pool looked as deep as an ocean.

The pool, which was in the backyard, looked as deep as an ocean.

4. The laundry hadn't been folded for weeks.

The laundry, which sat in a basket, hadn't been folded for weeks.

5. My mother makes the best banana bread.

My mother, who spends a lot of time in the kitchen, makes the best banana bread.

6. Nobody in my family dances quite like my brother.

Nobody in my family, which is full of dancers, dances quite like my brother.

7. Every year we go to Lake Topaz.

Every year we go to Lake Topaz, which is my favorite place.

Non-identifying clause

A non-identifying clause adds extra information about a person or thing that's already been identified in the sentence.

