

# Commission #1

Commission is a percentage of the product sale price. If a product sale price is \$100, and the commission is 10%, a salesperson will get \$10 in commission. Find out the commission of each salesperson below.

1. Mitsy sold a diamond ring. The sale price is \$5,000. The commission is 1%. How much commission will she get?



$$\frac{5000 \times 1}{100} = 50$$

She will get \$50 in commission.

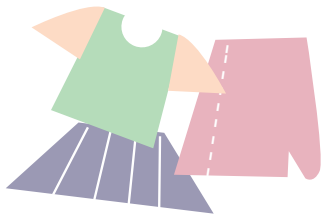
2. Jordan sold a camera. The sale price is \$200. The commission is 5%. How much commission will he get?



$$\frac{200 \times 5}{100} = 10$$

He will get \$10 in commission.

3. Andrea sells women's clothing. Today she sold a total of \$400. The commission is 7%. How much commission will she get?



$$\frac{400 \times 7}{100} = 28$$

She will get \$28 in commission.

## Challenge

Ashley sells women's lipstick. She gets \$15 per hour. Today she worked 5 hours and sold \$50 in lipstick. The commission is 3%. How much money did she make today?



$$\text{Ashley's total wages} = 15 \times 5 = 75$$

$$\text{Commission in sale} = \frac{50 \times 3}{100} = 1.50$$

$$\text{Total earning of Ashley today} = 75 + 1.50 = \$76.50$$