

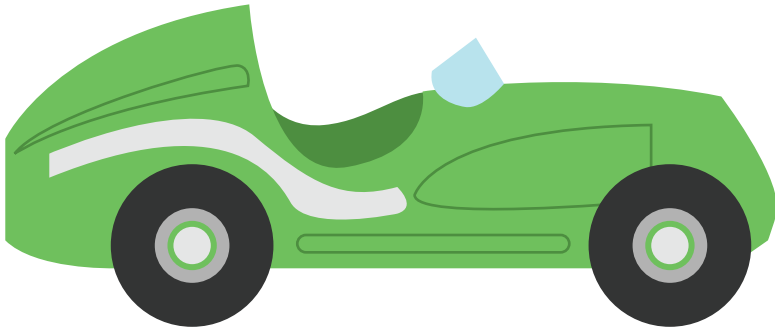
Name: _____

Date: _____

Measuring with Inches and Centimeters

Directions: Measure the pictures of the items below, then circle the correct measurements.
Remember: $\frac{1}{2}$ an inch can be written as 0.5 inches.

1.



Circle the length of the toy car in both inches and centimeters:

inches

a) 4 in

b) 9 in

c) 5 in

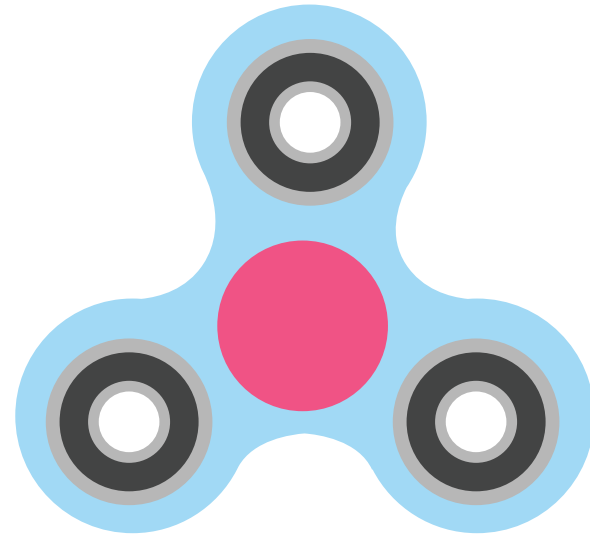
centimeters

a) 10 cm

b) 9 cm

c) 10.2 cm

2.



Circle the length of the spinner in both inches and centimeters:

inches

a) 4 in

b) 7 in

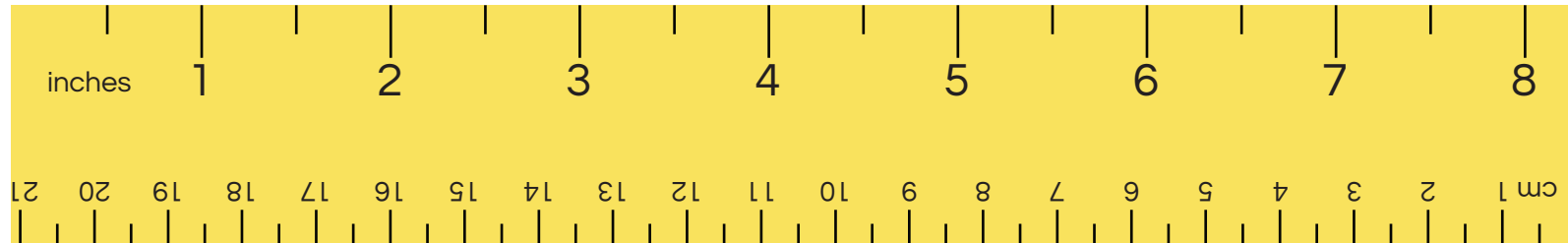
c) 3 in

centimeters

a) 7.6 cm

b) 8 cm

c) 7 cm



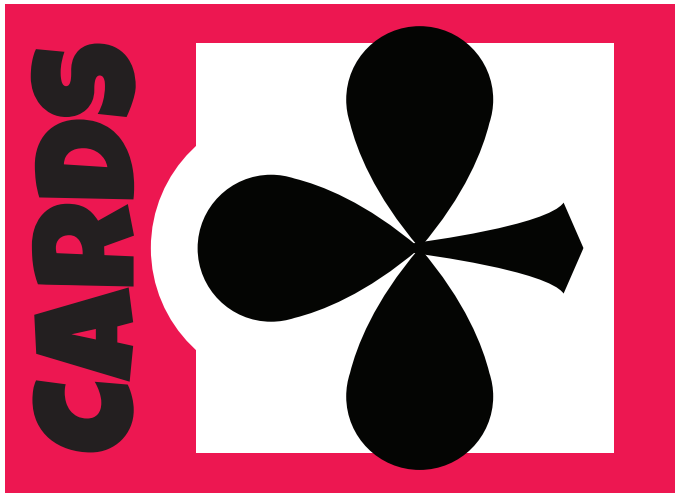
(print at 100%)

Name: _____

Date: _____

Measuring with Inches and Centimeters

Directions: Measure the pictures of the items below, then circle the correct measurements.
Remember: $\frac{1}{2}$ an inch can be written as 0.5 inches.



3. Circle the length of the cards in both inches and centimeters:

inches a) 4 in **b) 3.5 in** c) 8.9 in

centimeters a) 8.5 cm b) 9.1 cm **c) 8.9 cm**

4. Circle the length of the paint box in both inches and centimeters:

inches a) 7 in **b) 6.5 in** c) 16 in

centimeters **a) 16.5 cm** b) 8 cm c) 16 cm



(print at 100%)

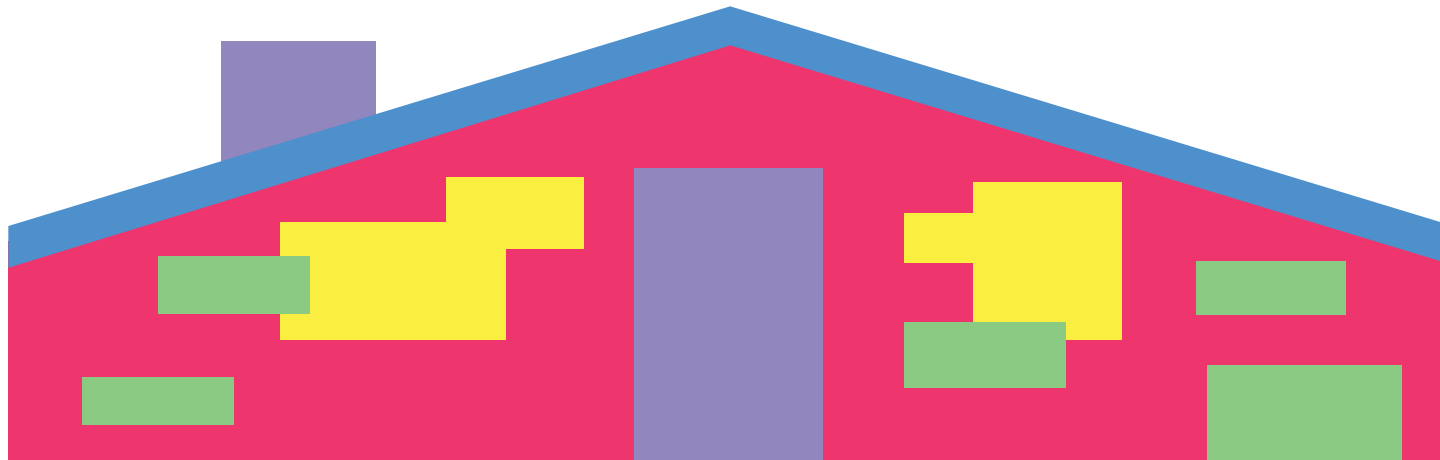
Name: _____

Date: _____

Measuring with Inches and Centimeters

Directions: Measure the pictures of the items below, then circle the correct measurements.
Remember: $\frac{1}{2}$ an inch can be written as 0.5 inches.

5.



Circle the length of the block house in both inches and centimeters:

inches

a) 7.5 in

b) 6 in

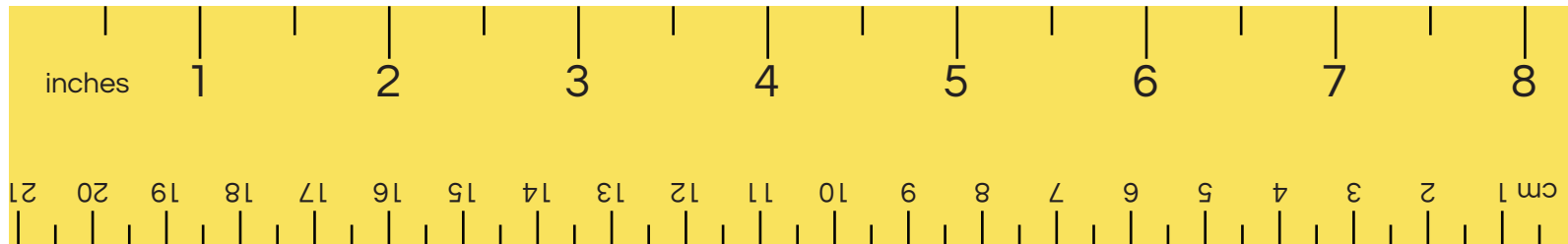
c) 8 in

centimeters

a) 18 cm

b) 19 cm

c) 20 cm



(print at 100%)