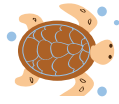
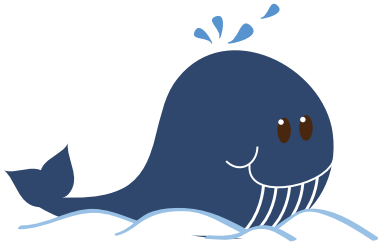


3rd  
Grade

# Learning about Weight

## Word Problems

Answer the questions below  
and show your work.



$$\begin{array}{r} 1,000\text{kg} \\ - 50\text{kg} \\ \hline 950\text{kg} \end{array}$$

The whale is **950 kilograms heavier** than the turtle.

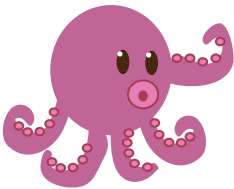
This whale weighs 1000 kilograms.  
This sea turtle weighs 50 kilograms.  
How much heavier is the whale?



$$\begin{array}{r} 150\text{kg} \\ - 2\text{kg} \\ \hline 148\text{kg} \end{array}$$

The lion is **148 kilograms heavier** than the rabbit.

This lion weighs 150 kilograms.  
This rabbit weighs 2 kilograms.  
How much heavier is the lion?



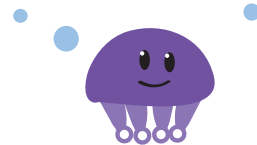
$$\begin{array}{r} 75\text{kg} \\ - 5\text{kg} \\ \hline 70\text{kg} \end{array}$$

The octopus is **70 kilograms heavier** than the starfish.

This octopus weighs 75 kilograms.  
This starfish weighs 5 kilograms.  
How much heavier is the octopus?

$$\begin{array}{r} 18\text{g} \\ - 2\text{g} \\ \hline 16\text{g} \end{array}$$

The jellyfish is **16 grams heavier** than the seahorse.



This jellyfish weighs 18 grams.  
This seahorse weighs 2 grams.  
How much heavier is the jellyfish?

## Challenge!



$$\begin{array}{r} 10,000\text{g} \\ - 5\text{g} \\ \hline 9,995\text{g} \end{array}$$

The dog is **9,995 grams heavier** than the robin.

This dog weighs 10 kilograms. This robin weighs 5 grams.  
How much heavier is the dog? (\*Hint: 1 kilogram is equal to 1000 grams).

**10 kilograms x 1,000 = 10,000 grams**